

PINE®

**SEOUL**

04591 서울시 중구 다산로20길 26 YB빌딩 2층 (신당동 341-16)  
2nd Floor, YB Building, 26, Dasan-ro 20-gil, Jung-gu, Seoul, Korea  
T +82 70-8671-3451 / F +82 70-8671-2594  
E pine@ybtex.com

**NEW YORK**

147 W. 35th Street #708 New York, NY 10001  
T +1 70-8299-5187  
E ny@ybtex.com

**SHANGHAI**

Room 1702, Building NO.7 Wealth Center, Shengze Town,  
Wujiang City Jiangsu, China 215228  
T +86 512-6386-7137  
E ch@ybtex.com

[www.pinetex.com](http://www.pinetex.com)



  
**ARCTUBE**  
*REAL SEAMLESS*







## What is ARCTUBE

Traditional down fabrics require the quilting process to create down channels or patterns. This quilting structure may cause feather loss at stitched areas.

ARCTUBE is a futuristic down proof fabric that does not require quilting. It is structured in multilayers that prevent wind from penetrating. ARCTUBE fabric is breathable and its tight construction prevents feathers from coming out. It can save production time and cost.



### REAL SEAMLESS

No quilting

- No extra cost for quilting
- Does not break the surface

### WIND PROOF

High density yarn structure

- Acts strongly against the penetration of wind
- Help keeping body heat

### DOWN PROOF

High density double layer weave

- Prevent feathers from coming out

### LIGHTNESS

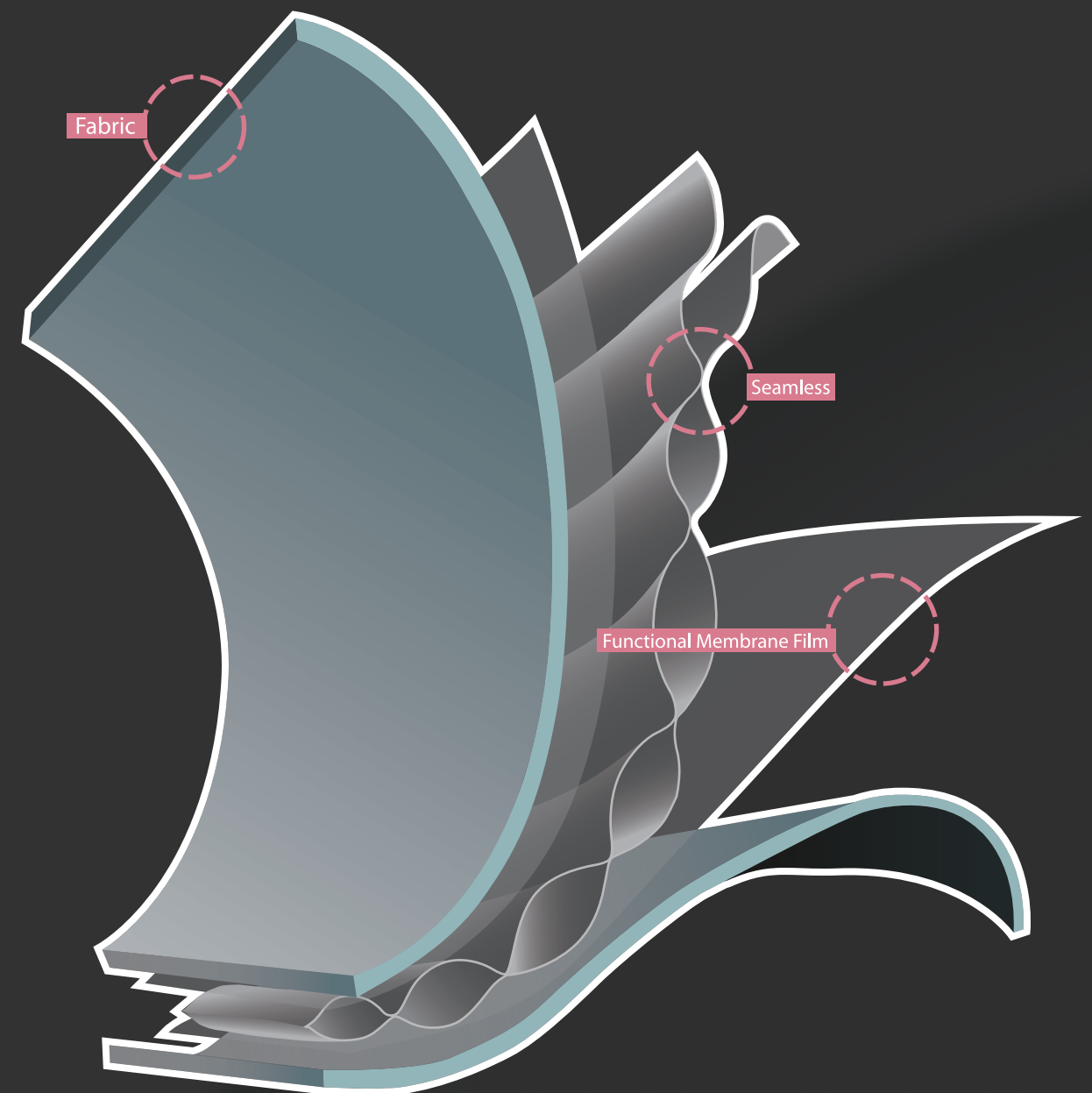
No down bag

- Using 20denier yarns
- Extremely light weight

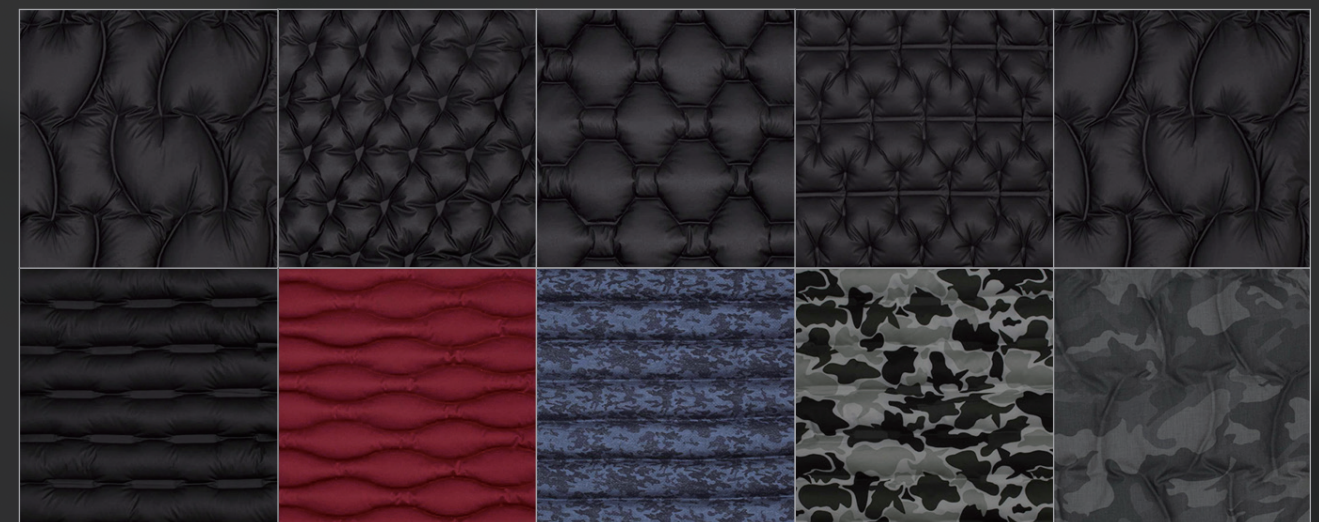
### FLEXIBILITY

Using spandex yarns

- Improve movement and durability



### PATTERNS / FACE

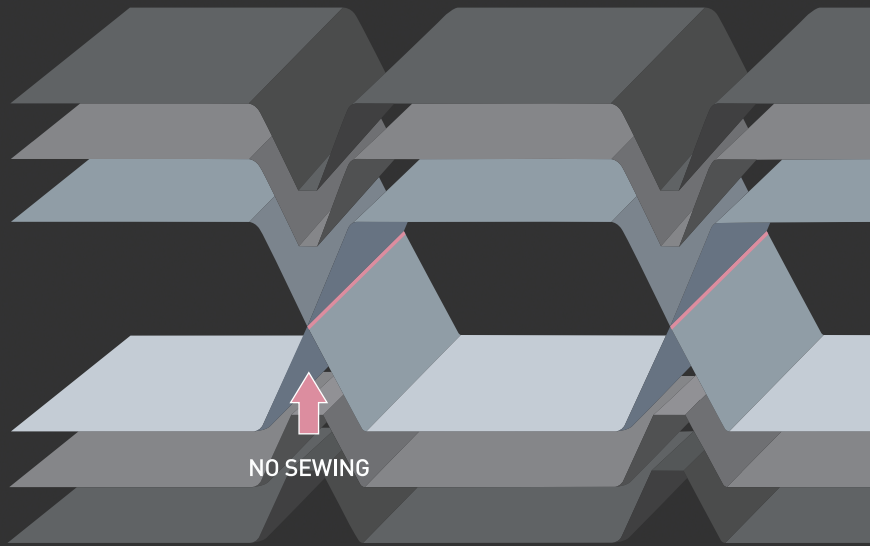




# K-TUBE

KNIT TUBE

- Various patterns are available  
It can be applied all different shapes and lines on the pattern  
(Straight lines / Curved lines / Diamond / Zigzag .... etc)
- Adding functional film  
It improves function (Water/Wind/Mite proof/Breathable ... etc)
- It can be applied all different types of fabrics (Wool / Cotton / Velvet / Leather ... etc)
- Depends on weight and funtion, the number layers are changeable.



## Seamless

### Composition

Polyester  
Nylon  
Cotton  
Wool

All of kinds contents  
Woven/Kint, Tricot weave

### Functional Membrane Film

- Goretex
- micropore
- PU



DOWN PROOF



WIND PROOF



WATER PROOF



MITE PROOF

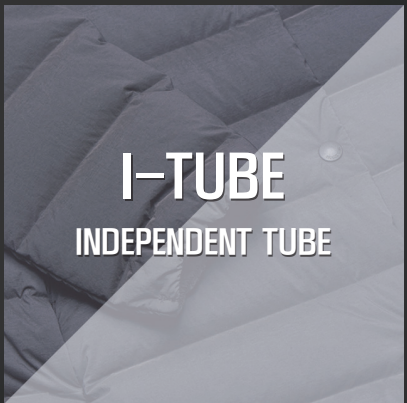


STRETCH



BREATHABLE

K-TUBE

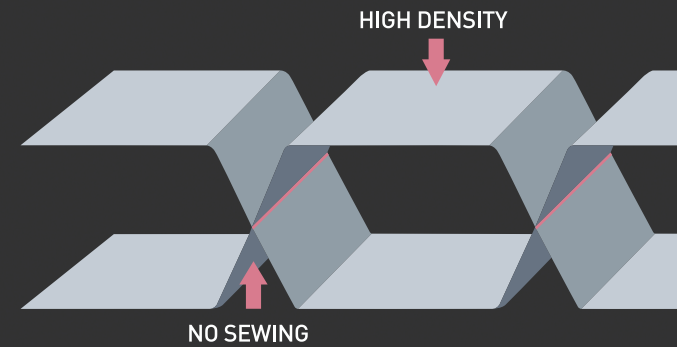




# I-TUBE

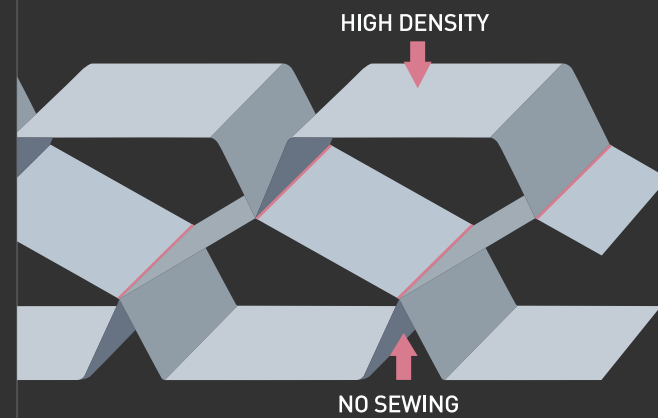
## INDEPENDENT TUBE

- High density stitchless double weave down proof fabrics.
- 20D, 30D, 50D, OR 20D, 30D Spandex qualities are available.
- Textured and printed qualities are available.  
(Dobby / Geometric / Camouflage / Floral prints)
- Better durability and clear surface than traditional quilted downs and hot melting downs.
- No down bag
- Very light weight
- All different size of channels are available by requirement.



# I-TUBE PLUS

## 3LAYERS INDEPENDENT TUBE



- High density stitchless triple weave down proof fabrics.
- Additional layer strongly prevents wind from penetrating and keep body heat.
- Honeycomb sturcture double the durability.
- Improved water proof funtion.
- All different size of channels are available by requirement.

Seamless

Composition

Polyester  
Nylon  
N/P  
CVC

Weave

Plain  
Dobby  
Stripe  
Printed



DOWN PROOF



WIND PROOF



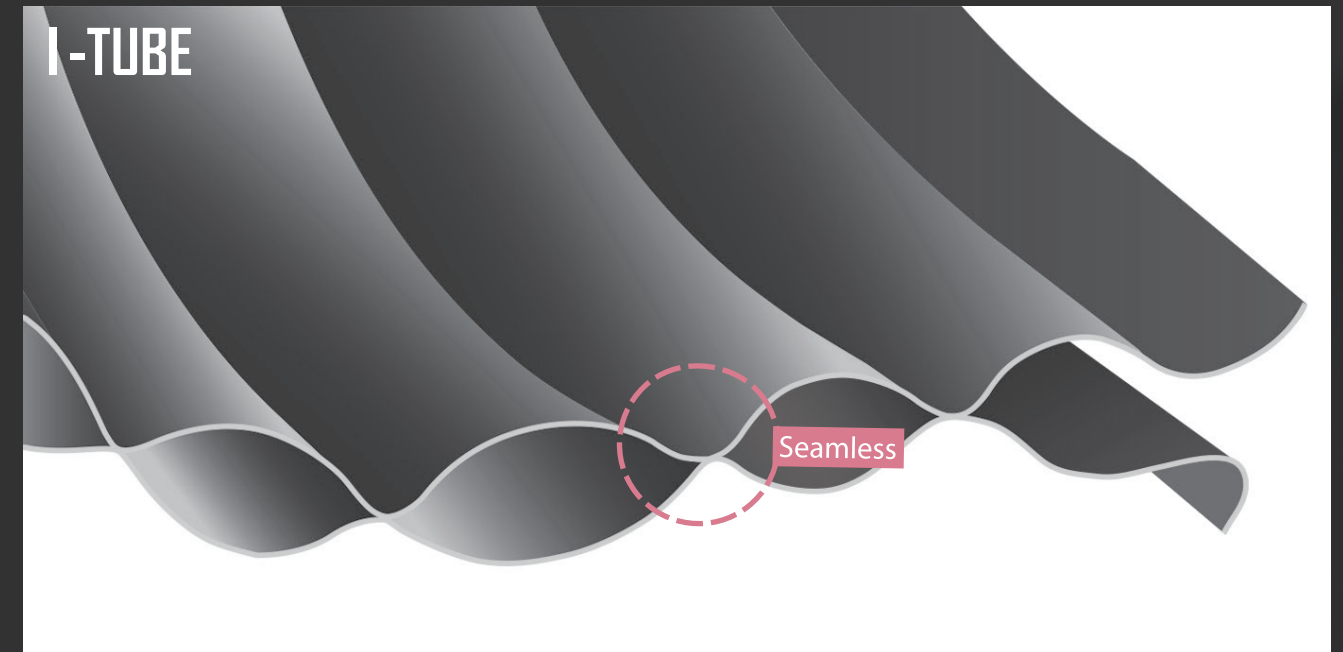
MITE PROOF



STRETCH

I-TUBE

# I-TUBE



# I-TUBE PLUS



## PATTERNS



I-TUBE