



Messe München

Connecting Global Competence

ISPO AWARD RECIPIENTS

2017/2018

ISPO.COM





ISPO AWARD

Each year ISPO honors the sporting goods industry's most outstanding products with the ISPO AWARD. But ISPO itself is much more than an exhibition of products: It's the leading international platform for the entire sports business. ISPO is the meeting point for the decision makers and creative minds behind the brands.

The ISPO AWARD names the best products in the five segments: Action, Outdoor, Ski, Performance and Health & Fitness and each segment is divided into product-specific categories. A separate Eco Jury honors extraordinarily sustainable innovations and services.

DIVISIONS	ISPO AWARD				
CATEGORIES	Action	Outdoor	Ski	Performance	Health & Fitness
SEGMENTS	Several categories				

Separate, objective international juries for each segment assess and judge the submissions:

ISPO AWARD **PRODUCT OF THE YEAR**

For the overall best product from the group of GOLD WINNERS from each segment.

ISPO AWARD **GOLD WINNER**

For the best product within the respective category.

ISPO AWARD **WINNER**

For additional noteworthy products within the respective category.

ISPO AWARD **ECO ACHIEVEMENT ACCESSORIES**

For an extraordinarily sustainable / eco-friendly accessory.

ISPO AWARD **ECO ACHIEVEMENT APPAREL**

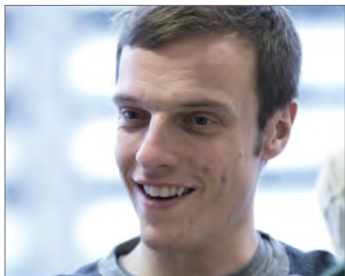
For an extraordinarily sustainable / eco-friendly garment.

ISPO AWARD **ECO ACHIEVEMENT HARDWARE**

For an extraordinarily sustainable / eco-friendly product.



ACTION



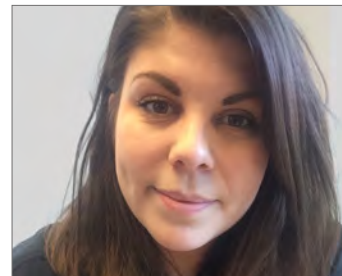
TOM WILSON-NORTH (GBR)
Zero G Chamonix, Category
Manager Snowboard



JAKA BENEDIK (SLV)
Benedik Design, Product Developer
& Designer



FRANCOIS APPLAGNAT (FRA)
CCI Bayonne, Business
Development



JOHANNA BLIXT (SWE)
Hollywood Sweden, Sales



TIBOR SIMAI (GER)
Professional Mountainbiker



ROBIN LECORVAISIER (FRA)
FISE/Hurricane Action Sports,
Development



TAMMY ESTEN (UK)
MINT Snowboarding, Founder



PHILIP VOLKER (GER)
Consumer

When it comes to relevant brands and products, no other segment is more dependent on trends and more diversified than the action segment. Innovation meets tradition; kick-starters meet established brands; free spirits meet precision. Innovative means of movement, different kinds of „boards“, videos of most extreme situations, and accessories with unique gimmicks - all of this and more is part of ISPO AWARD's action segment.

The jury reflects the same variety. A colorful mix of experts from different areas: summer and winter sports athletes, journalists, buyers, retailers, and a consumer. Each one is an expert in their respective field - and together, they

are a group enthusiastic about action sports, paired with the necessary realistic sense for trends, an urge to test products, and exceptional technical expertise.

This diversity enables the jury to take an in-depth look at the products and allows them to answer significant questions that arise during the jury meeting.



KORUA SHAPES

TUGBOAT

The big nose gives you extreme float. A very strong taper with the matching radius and a tipping point on the 3D base makes it easier to set on edge. Low profile channels guarantee stability and grip. P-Tex edges and this new base design can be carved on hardpack groomed slopes.

Hall B6 / Booth 210



ISPO AWARD **GOLD WINNER**



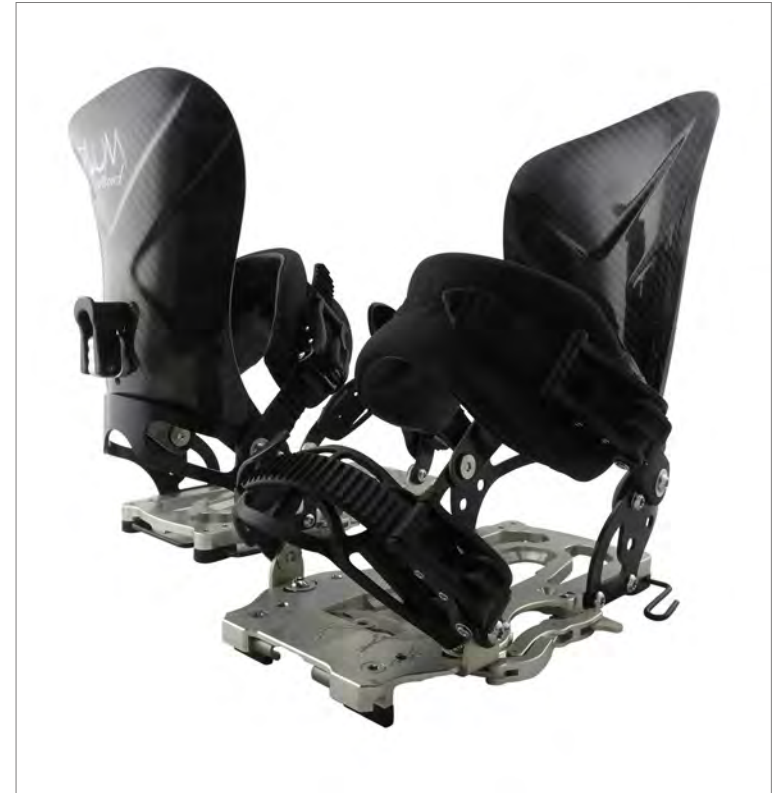
Bike

GRIPGRAB **INSIDEGRIP**

InsideGrip improves overall grip of gloves rather than only grip between glove and handlebars. Handlebar grips provide plenty of friction, but the palm. The solution features silicon prints located inside the glove on palm and fingertips for maximum grip.

www.gripgrab.com

ISPO AWARD **GOLD WINNER**



Bindings

PLUM **MODLOC**

The interface is composed of discs and triangular PAD plates. The binding has to be positioned on the PAD. To move from Goofy to Regular, you only need to loosen the PAD screw, lift up the PAD and rotate it 180°. The heel cup adjustment has been simplified thanks to a user-friendly sliding rail.

Hall A6 / Booth 431

ISPO AWARD **GOLD WINNER**



Footwear

THIRTYTWO TM-THREE

The ThirtyTwo TM-THREE offers perfect fit and flex with innovative technology. This is the first asymmetric boot from the inside and out, due to inserted Recoil Flex Control rods for maximum performance. Its new Elite footbed with Adaptive Arch Supports with four interchangeable arch wedges.

www.thirtytwo.com

ISPO AWARD **GOLD WINNER**



Goggles & Glasses

XFORCE ASSASSIN XL

ASSASSIN XL is a frameless and ultra light-weight design goggle with new anti-fog technology. Making double lenses obsolete and four times more efficient than normal anti-fog lenses. Using a single lens with the latest technology offers a higher transmission for crystal clear vision to the wearer.

Hall A4 / Booth 524

ISPO AWARD **GOLD WINNER**



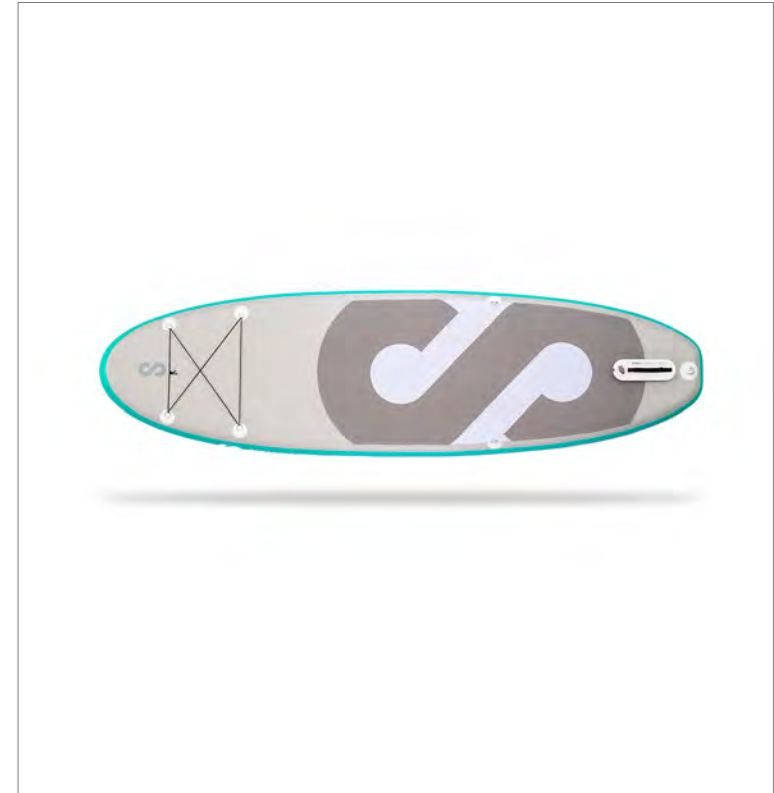
Protection & Safety

KOMPERDELL PROTECTOR SERIES CROSS 6.0

The safest protector series ever, "Cross 6.0" is an extra flexible multi-layer dual density foam. CE-16212 approved & many times better than the requiring legal standards. The vest's new technology offers best breathability and its ergonomic cut and the kidney belt make it fit perfectly.

Hall A4 / Booth 400

ISPO AWARD **GOLD WINNER**



Watersports

SIPABOARDS AIR

The heart of every SipaBoards Air is the removable SipaAir compressor that retracts into a slot, where the inflation valve on a normal SUP would be. With a wave of a hand the board pumps itself up to perfect pressure. One charge lasts for three inflations. The compressor can also serve as an independent mobile electric pump.

www.sipaboards.com

ISPO AWARD **WINNER**



Avalanche Safety

Mountain Hub

AVATECH SCOPE POLE

The cloud-connected Avatech Scope carbon ski pole gathers snowpack information and evaluates data via the global Mountain Hub platform.

Hall A3 / Booth 428



Avalanche Safety

Avalanche Float Solutions

RESERO XV

Resero XV allows riders to release their snowboards when caught in avalanches, significantly increasing chances to survive.

Hall B5 / BRANDNEW Village



Avalanche Safety

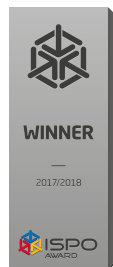
ARVA

REACTOR ULTRALIGHT 25

Reactor UL25 offers the best storage, weight and comfort properties, maximizing safety with ARVA Airbag Technology.

Hall A3 / Booth 402

ISPO AWARD **WINNER**



Footwear

WETTY WETSUIT

NEOPRENE BOOTIE

Booties made from limestone and Kevlar neoprene for perfect fit. A latex under sole and heel give that barefoot feeling sensation.

www.wetty.fr



Goggles & Glasses

SWANS

ROVO-CU/MDH-SC-PAF

The ULTRA lens offers high contrast vision under harshest weather conditions and top visibility in sunshine plus a new air-blow anti-fog function.

Hall A5 / Booth 530



Hydration Systems

Zac Speed

CONFIGR8 BACKPACK SYSTEM

The adaptable CONFIGR8 pack system offers never seen functionality and performance. Individually customizable to user needs.

www.zacspeed.com

ISPO AWARD **WINNER**



Wheeler

OLAF scooter

OLAF URBAN

OLAF Urban's 4-in-1 solution includes a removable, ergonomic backpack, sturdy trolley, a steerable kick-scooter, and a wooden skate-board.

www.olaf-scooter.com



Watersports

MARINEPOOL

LIFE SHIRT

Life Shirt is an auto-inflating personal flotation device that comes with an intelligent operating system to protect users through risk calculation.

Hall B1 / Booth 107

OUTDOOR



MARK HELD (GBR)
European Outdoor Group, General Secretary



PROF. KUNO PREY (ITA)
Free University of Bozen, Professor of product design



ASTRID SCHLÜCHTER (GER)
Sport-Fachhandel, Editor



SUN BIN (CHN)
Chinese National Climbing Team



PIOTR TURKOT (POL)
4outdoor.pl, Managing Director



ANDERS ENGSTRÖM (SWE)
Alewalds Outdoor & Sports, Owner and CEO



MAREK _WI_CH (POL)
Polar Sport Warsaw, Client Service



MARIANNE VAN DER STEEN (NL)
Consumer

The term Outdoor does not have a single, simple definition. That's why the segment is one of the most exciting, with a practically inexhaustible product diversity. A guideline, a decision-making tool for consumers thus seems all the more important, especially because even experts are often overwhelmed by the extensive product jungle from A as in accessories or apparel to Z as in zip-line.

In the process, the outdoor jury needs to be particularly analytical. The jury comprises extreme mountaineers, journalists, retailers, and members of outdoor associations. They put each product to the acid. A necessity because safety and functionality are crucial. They may not only be responsible for fun or failure, but could also be essential for survival.



SCARPA RIBELLE TECH

A new versatile boot/shoe category which combines best performance features for pro alpinists while delivering the highest comfort, lightness and durability level. RIBELLE has the widest mountain usage range: from trekking to mountaineering. The new all-round, all-seasons boots for professionals and outdoor lovers!

Hall A3 / Booth 212



ISPO AWARD **GOLD WINNER**



Accessories

KATADYN BEFREE WATER FILTRATION SYSTEM

The BeFree water filter weighs only 59g. The 0.1 micron hollow EZ-Clean Membrane fiber filter converts water from natural sources into clean, safe drinking water. Just fill up the Hydrapak Softflask™ and let it do the work. Easy to clean by shaking the filled flask or by removing the filter and swishing in clear water.

Hall A2 / Booth 426

ISPO AWARD **GOLD WINNER**



Backpacks & Bags

SALEWA ULTRATRRAIN 18 BP

Speed hikers need a lightweight backpack with ample volume, load stability and good breathability. This backpack fits like a trail running vest and has the volume of a hiking pack. The Ultra Train 18's Twin Compression System allows you to easily squeeze and snug the backpack to your back with two adjustment straps.

Hall A3 / Booth 402

ISPO AWARD **GOLD WINNER**



Backpacks & Bags

KATHMANDU TERRANE ADAPT PACK

The most versatile travel pack design on the market. Adaptive wheel-set design with flipped backpacking on its head for rapid transition from backpack to trolley bag. An ergonomically fitted C3 Adapt harness provides great carrying comfort and the wheel-set design rolls on anything from smooth airports to rugged cobblestones.

Hall A2 / Booth 429

ISPO AWARD **GOLD WINNER**



Down Layer

DESCENTE ALLTERRAIN MIZUSAWA DOWN JACKET ,SCHEMATECH-M'

A timeless, woven nylon down jacket that eliminates traditional waterproofing problems with down. Unique decorative Cordura Nylon reinforced Dobby panels woven seamlessly into the fabric offer strength and durability without compromising overall stretch and freedom of movement. A pair of Boa fasteners adjusts body fit and regulates warm air within.

Hall B1 / Booth 200

ISPO AWARD **GOLD WINNER**



Down Layer

BLACKYAK **HEAVY DUTY DOWN JACKET**

A jacket with innovative down chambers, developed in cooperation with athletes. In order to avoid thread exposure and likely damage through abrasion, the development team divided the chambers through cut seams, where the thread is located inside and protected from damage through layers of fabric.

Hall B1 / Booth 312

ISPO AWARD **GOLD WINNER**



Equipment

WILD COUNTRY **REVO**

The first bi-directional assisted locking belay device. Its innovative panic-proof release mechanism eliminates the risk of accidents. Its function is independent from the loading orientation of the rope. Any uncontrolled descent will cause the inertia reel to activate, grip the rope and arrest the fall.

Hall A3 / Booth 402

ISPO AWARD **GOLD WINNER**



Footwear Lifestyle

BAABUK **WOOL BOOTS**

Combines the contradictions of freedom of movement, optimal ventilation and protection against the elements faced in headwind sports.

Hall A2 / Booth 511

ISPO AWARD **GOLD WINNER**



Hiking & Trekking Shoes

HAGLÖFS **GRYM KEPROTEC GT**

Trekking boot made from a unique material mix, resulting in a lightweight, durable, comfortable, and quick-drying boot. Extremely protective and bluesign approved Schoeller Keptec upper fabric, made with Kevlar, combined with GORE-TEX materials for a watertight and durable boot, equipped with RECCO application.

Hall A2 / Booth 208

ISPO AWARD **GOLD WINNER**



Hybrid Mid Layer

DEVOLD OF NORWAY **TINDEN SPACER JACKET**

Lightweight, yet super insulating mid-layer. Spacer fabric is combined with wool to create pockets of air for enhanced insulation. This innovative technology maintains natural wool properties like the ability to regulate body temperature and create warmth even when wet.

Hall A2 / Booth 116

ISPO AWARD **GOLD WINNER**



Hybrid Mid Layer

PYUA - ECORRECT OUTERWEAR **'DIVE-Y' - MEN'S HOODED FLEECE PULLOVER**

Warm fleece hoodie whose hood can be used as loop scarf or balaclava and includes sleeves with integrated mittens. 'S-Café' technology for quick dry, odor control and UV protection 50+. Made in Europe from 100% recycled polyester.

Hall A2 / Booth 312

ISPO AWARD **GOLD WINNER**



Hybrid Mid Layer

THE NORTH FACE SUMMIT L3 VENTRIX HOODIE

VENTRIX technology is engineered from a quilt synthetic that has laser-cut ventilation holes body-mapped into high-perspiration areas. When the user is static, these holes remain closed, retaining heat. However, when the user starts to move, they dynamically open, allowing breathability and regulating core body heat.

Hall A1 / Booth 202

ISPO AWARD **GOLD WINNER**



Hybrid Outer Layer

BLACKYAK SIGNATURE JACKET

Style, function and warmth. The BLACKYAK Signature Jacket amplifies the collection as a brilliant functional insulation item. This jacket is constructed using a combination of lightweight and protective materials like Polartec Alpha that will provide you with a fantastic range of movement, comfort, warmth and breathability.

Hall B1 / Booth 312

ISPO AWARD **GOLD WINNER**



Lifestyle & Fashion

DESCENTE ALLTERRAIN SCHEMATECH BOA SHELL JACKET

A versatile, woven stretch nylon shell jacket with a nonstick printed PU membrane. Highly waterproof and breathable, featuring unique Cordura Nylon Dobby panels woven seamlessly into the fabric, for strength, continuous stretch and durability at shoulder and elbows.

Hall B1 / Booth 200

ISPO AWARD **GOLD WINNER**



Outer Layer 2 L

TERNUA CRADLE JACKET

Elegant parkas made with a 2L recycled polyester shell that has a fluorocarbon free DWR, laminated with a functional polyester membrane. 30D recycled polyester lining and 200 grs of thermashell pearl eco insulation from recycled plastic bottles. Jackets are completely recyclable.

Hall A3 / Booth 506

ISPO AWARD **GOLD WINNER**



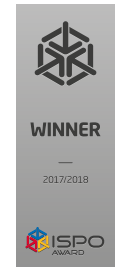
Outer Layer 3 L

BERGHAUS **HYPER 100 JACKET**

The Hyper 100 is the lightest 3-layer waterproof jacket and the first ever sub 100g 3 layer. A 6d face, 7 micron membrane and 8 denier backer it boasts breathability of 55,000 mvtr and tear strength up to 3 times stronger than previous hyper weight waterproofs.

Hall A3 / Booth 506

ISPO AWARD **WINNER**



Accessories

PETZL

NOCTLIGHT

Protective 85g case that diffuses light and turns headlamps into lanterns: placed on a surface, suspended in a tent, attached to a belt etc

Hall A3 / Booth 408



Backpacks & Bags

Peak Design

Everyday Backpack

A pack to give you unrivaled accessibility to ever-changing gear, expandable, practical and adaptable to various load sizes and types.

www.peakdesign.com



Base Layer

Odlo

Evolution Windshield

Evolution Windshield base layer protects against the cold, providing freedom of movement and optimal ventilation.

Hall B3 / Booth 302

ISPO AWARD **WINNER**



Cooking

Primus

PRIMETECH STOVE SET

Compact, lightweight stove set. The effective windscreen, pot with integrated heat exchanger and regulated valve reduce fuel consumption.

Hall A2 / Booth 202



Cooking

Cafflano

CAFFLANO COMPACT

An advanced coffee brewer consisting of a silicone bellows with foldable press guide, ultra-fine stainless filter and airlock cap.

Hall A2 / Booth 428



Cooking

Sea to Summit

X-SEAL & GO

After usage, container collapses to reduce bulk. Durable and easy to clean, made from top-quality materials, microwave- and dishwasher-safe.

Hall B1 / Booth 212

ISPO AWARD **WINNER**



Down Layer

Fjällräven

KEB EXPEDITION DOWN JACKET

Combines excellent insulation with extreme durability. With ethical down, recycled polyamide, PFC-free DWR treatment.

Hall A2 / Booth 202



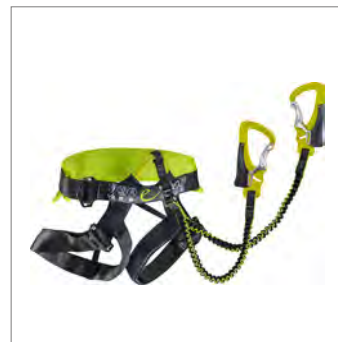
Down Layer

Helly Hansen

EXPEDITION PARKA

Will withstand extreme cold conditions in polar expeditions or high altitudes with down insulation. Light-Flex prints and 100% DWR coating.

Hall A1 / Booth 208



Equipment

Edelrid

JESTER COMFORT

Combining a climbing harness with a Via Ferrata set, it has the shock absorber integrated in the leg loops. For more comfort and less bulk.

Hall A3 / Booth 422

ISPO AWARD **WINNER**



Equipment

Edelrid

BALANCE

No more uneven landing zones due to a textile 'subbase' filled with styrofoam balls that can even out the uneven structures of the ground.

Hall A3 / Booth 422



Footwear Lifestyle

BERG OUTDOOR

JINDO BUREL

Durable, flexible, water-repellent and insulating sneaker with Burel wool. Eco-friendly and recyclable, from rubber outsole to cotton laces.

Hall A1 / Booth 102



Gloves & Headwear

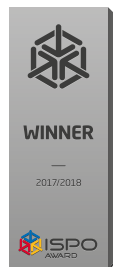
Reusch

ARKTIKA EXPEDITION MITTEN

Expedition mitten featuring four different synthetic and natural insulation layers of more than 600gr/m_ on backhand and 300gr/m_ on palm.

Hall B3 / Booth 410

ISPO AWARD **WINNER**



Hiking & Trekking Shoes

Mammut

NORDWAND LIGHT MID GTX

Lightweight (645g / Size 8.5), durable and hardwearing Schoeller softshell fabric shoe for unique foot-ing, safety, comfort and precision.

Hall A3 / Booth 302



Hybrid Outer Layer

ARCTOS

FIRE BALL HYBRID JACKET

Lightweight jacket with ergonomic cutting and body mapping made from 10D fabric, Polartec Power Stretch Pro and 900FP goose down.

www.arctos.cn



Hybrid Outer Layer

ARCTOS

FIRE BALL HYBRID PANT

Light (220g), warm, breathable, 80% length insulated pant to match mountain boots.

www.arctos.cn

ISPO AWARD **WINNER**



Hydration Systems

Contigo

AUTOSPOUT CHUG WATER BOTTLE

New water bottle for a high flow of water. Ideal to drink large amounts of liquid quickly without spilling, due to the bottle's Autospout.

Hall A2 / Booth 327



Hydration Systems

CamelBak

QUICK STOW CHILL SOFT FLASK

The only insulated soft-sided water bottle. Small, lightweight, collapsible to the size of your palm. Insulation to prevent freezing.

Hall A2 / Booth 502



Insulated

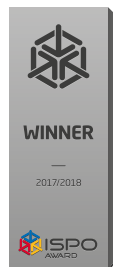
KROSSTORM

INTELLIGENT WARMING PADDING JACKET

The latest flexible intelligent temperature control technology and 3M Thinsulate insulation padding are used in this jacket.

Hall B1 / Booth 443

ISPO AWARD **WINNER**



Insulated

Blackyak

VIVID JACKET

Multi functional insulation jacket, ensuring maximum moving space and moisture management for high activity sports.

Hall B1 / Booth 312



Lighting & Energy

SunnyBAG

LEAF+

200g panel that provides power with a Hybrid-Solar-Technology. Perfect to fill device batteries in up to two hours, even on cloudy days.

www.sunnybag.at



Lighting & Energy

Nitecore

LA10

Lip-stick shaped lantern for easy storage with outstanding practicality. Retractable 135 lumen diffuser and magnetic base, runs up to 23 hours.

Hall B2 / Booth 412

ISPO AWARD **WINNER**



Mid Layer

DESCENTE ALLTERRAIN

KARUISHI PARAHM HOODIE

Functional hoodie in Karuishi Flex Knit, a unique thermal fabric with a wetsuit look.

Hall B1 / Booth 200



Outer Layer 1 L

Devold of Norway

TROLLKYRKJA JACKET

Outer layer in 100 % Merino wool. Wind and water resistant with great breathability - perfect for year-round use.

Hall B1 / Booth 200



Outer Layer 2 L

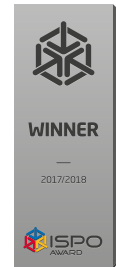
Yeti

RAA

A technical hardshell raincoat, filled with first class European 90/10 700+ Crystal Down Dry. Has a waterproof 2-way zip.

Hall A2 / Booth 311

ISPO AWARD **WINNER**



Tents & Recreation

Sea to Summit

COMFORT PLUS SI MAT

Comfortable self-inflating mattress with exclusive valve and a luxurious 30D stretch knit fabric for a soft next to skin feeling on top.

Hall B1 / Booth 212



ISPO AWARD



SKI



WOLFGANG GREINER (GER)
RoadTrip & SkiPresse, Publisher



ALEXA DEHMEL (GER)
Active Sports Design, Founder and Designer



MATHIEU ROS (FRA)
Nivéales Media, Editor-in-Chief



TOMASZ KURDZIEL (POL)
Magazine NTN Snow & More, Editor-in-Chief



STÉPHANE VESIN (GER)
European Patent Office for Ski & Bindings



JANA LINDQVIST (SWE)
Alpingaraget, Hardgoods Buyer



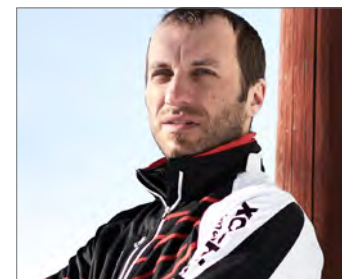
CHRISTOF RONGE (GER)
Assa Abloy, Industrial Design Manager



ANDERS SELLING (SWE)
HuginBiz AB, Chairman of the Board



YOO SEUNG HYUN (KOR)
Korean Alpine Federation, Alpine Instructor



MARIO FELGENHAUER (GER)
xc-ski.de, Owner and Editor



JANINE HANNEMANN (GER)
Consumer

The popularity of skiing is still going strong, and it's an important pillar of the sporting goods industry. There's an entire industry catering fun and adventures on snow, with most diverse characteristic like kickers, rails and pipes of snow parks or the constantly growing freeride and backcountry scene, ski touring or cross-country skiing.

Accordingly, the manufacturers offer a most diverse and innovative range of products to supply the target groups with the perfect equipment. The ISPO AWARD Ski segment, with more submissions than any other segment, keeps

the jury really busy. Naturally, the decision-making process is not easy due to the number of products and the dissimilarity of the individual categories. To accomplish this, it required a jury with a wide-ranging spectrum of knowledge, that includes professional athletes, retailers, media representatives, mountain guides, and consumers.



BOOTDOC BD 3D SCANNER VANDRA

The new BOOTDOC 3D foot scanner Vandra delivers a three-dimensional image of both feet in seconds. It provides a wealth of measurement data on instep height, ankle circumference, inner foot length and so on while also recommending sizes. The data can be used to find the right ski boots / sport shoes and insoles quickly.

Hall A4 / Booth 336



ISPO AWARD **GOLD WINNER**



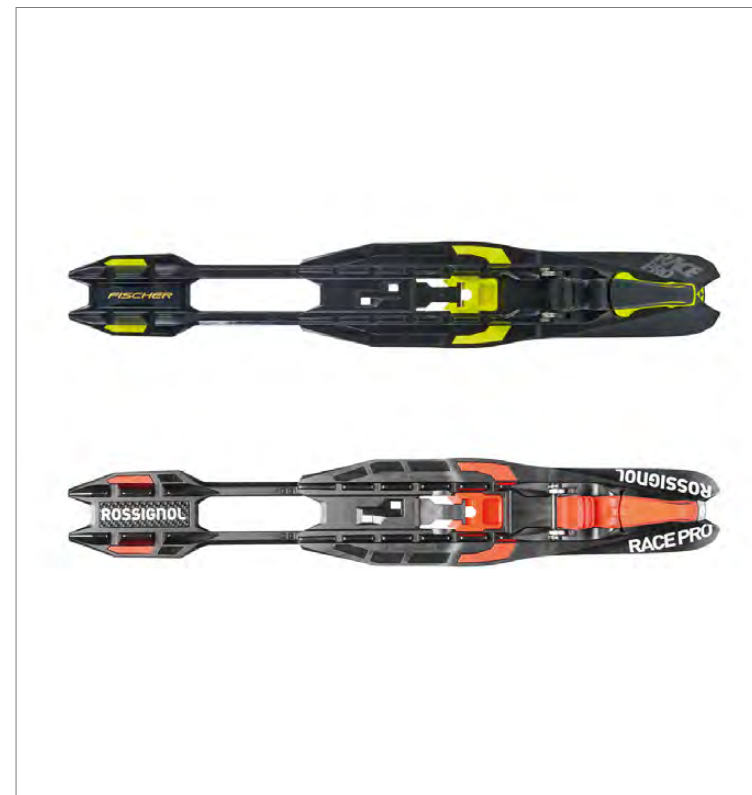
Backpacks & Bags

MILLET PIERRA MENT 20

An ISMF-approved, 250g ski mountaineering backpack with ergonomics tuned for performance. Each feature is engineered to generate the lightest, most ergonomic solution. Whether for crampons access, ski fastening, or carrying-harness adjustment, the objective was to trim weight while combining reliability and robustness.

Hall A3 / Booth 512

ISPO AWARD **GOLD WINNER**



Cross Country

FISCHER SPORTS & SKIS ROSSIGNOL TURNAMIC RACE PRO CLASSIC

Under the TURNAMIC brand, Fischer and Rossignol present the newly developed Race Pro Classic binding. It's equipped with the innovative Turn Lock mechanism for easy entry and exit and the Double Lock Slider for toolless adjustment of the binding position. This setup optimized the dynamics and performance of the ski.

Hall A4 / Booth 202 + 212

ISPO AWARD **GOLD WINNER**



Gloves & Headwear

BLACK DIAMOND HELIO GLOVES

The Helio Gloves provide serious versatility for alpine objectives. The 3 in 1 system with a durable softshell liner glove and a light, durable, insulated outer glove is superlight und bulk-free. The lightweight glove used for climbing up fits inside the glove used for skiing down, providing just the right warmth.

Hall A3 / Booth 206

ISPO AWARD **GOLD WINNER**



Helmets

SCOTT SPORTS SYMBOL 2 PLUS D

This helmet outperforms its competitors in safety and ventilation. D30 inserts offer low, mid and high energy impact absorption, MIPS technology addresses rotational forces, and 360 Pure Sound guarantees better noise perception. The dual active venting system maximizes ventilation/insulation depending on the user's needs.

Hall A6 / Booth 502

ISPO AWARD **GOLD WINNER**



Hybrid Base Layer

POC LAYER

High-functionality base layer: comfort, breathability, compression, warmth, wicking. To ensure that POC layer stands up to the extremely sharp edges used in ski racing, the Dyneema fabric was strategically placed around the jersey and tights to ensure that areas most exposed to cuts or abrasion are protected.

Hall A4 / Booth 226

ISPO AWARD **GOLD WINNER**



Hybrid Outer Layer

PICTURE ORGANIC CLOTHING ICELAND PROKNIT JACKET

The Iceland ProKnit Jacket is the world's first multi-density knitted snowboard and ski jacket. Multi-density knitted fabrication offers clear benefits in terms of breathability, natural stretch comfort, resistance to abrasion and a significantly eco-friendly choice.

Hall B5 / Booth 404

ISPO AWARD **GOLD WINNER**



Outer Layer 2 L

ROSSIGNOL ATELIER COURSE JKT

ATELIER COURSE JKT is a full technology Jacket: 4-way stretch fabric with a prismatic design. With new carbone / basalt fabric for reinforcement parts and a new venting system. The patented and exclusive SENSOR SUPPORT technology is a muscle support system inside the jacket, which can be activated individually.

Hall A4 / Booth 212

ISPO AWARD **GOLD WINNER**



Outer Layer 2 L

COLMAR G+ GRAPHENE THERMOCOLMAR INSULATION JACKET

Ski jacket made with 4-way stretch fabric. Waterproof and breathable Colmar Prooftech membrane. G+Thermocolmar insulation with G+Graphene evenly distributes the body heat. Its graphene-based print is visible through a thin colorful transparent lining.

Hall B2 / Booth 204

ISPO AWARD **GOLD WINNER**



Outer Layer 3 L

ARC'TERYX WOMEN'S SHASKA SKI TOURING PANT

Female Arc'teryx athletes challenged the design team to create a ski touring bib that is both functional and flattering. With a combination of soft shell and 3L GORE-TEX C-Knit materials, the lightweight Shaska Pant offers full weather protection and smart detailing for dedicated ski tourers.

Hall A3 / Booth 306

ISPO AWARD **GOLD WINNER**



Outer Layer 3 L

NORRØNA LOFOTEN ACE GORE-TEX PRO JACKET

Extremely durable, light and breathable jacket with the newly developed GORE-TEX fabric with Vectran fibers. Features include a fitted storm hood with room for your helmet with single hand adjustment. A game changer for freeriders and an ace within its segment.

Hall A6 / Booth 402

ISPO AWARD **GOLD WINNER**



Poles

KOMPERDELL **FATSÖ 430**

The extra broad and soft grip assures a yet unknown grip and perfect fit of the pole, while the brandnew Powder Strap helps to adjust the size easily and facilitates the opening of the strap. The high-quality materials guarantee maximum robustness. The powder basket adjusts automatically to the slope inclination.

Hall A4 / Booth 400

ISPO AWARD **GOLD WINNER**



Retail & Service Equipment

FISCHER SPORTS **VACUUM**

The Vacuum 3D foot scan creates a digital copy of the feet and visualizes all relevant measurements. Thanks to the Virtual Try On, the dealer can select a perfectly fitting boot among all important boot models in the database. If necessary, the integrated Vacuum customization provides two fitting processes.

Hall A4 / Booth 202

ISPO AWARD **GOLD WINNER**



Ski off Piste / All Mountain

BLIZZARD **SPUR**

Thanks to its floating shoulder, asymmetric sidecut and a massive tip and tail taper, the Spur easily surfs through all types of snow. The new Carbon Flipcore Dynamic Release Technology reduces torsion and vibrations in tip and tail, adds control and stability underfoot and provides the best weight-to-performance ratio.

Hall A5 / Booth 502

ISPO AWARD **GOLD WINNER**



Ski on Piste

BOGNER **B LIGHT VT**

The B Light VT combines unique performance with minimum weight due to an entirely new core construction with vertical Titanal strings within the patented bamboo composite. This innovative construction made it possible to create a ski with a perfect torsional stiffness-to-flex ratio, in combination with low material thickness and weight.

Hall B1 / Booth 200

ISPO AWARD **GOLD WINNER**



Skitour Equipment

ELAN IBEX 84 CARBON XLT

The IBEX 84 Carbon XLT weighs in at only 1,000g (163cm) and targets athletes, not shying away from long ascents. Despite the ultra-light feel of Bridge Tech, the ski remains stable even in harshest conditions. Integrated carbon rods assure powerful rebound, while the Carbon PowerShell adds torsional rigidity.

Hall A5 / Booth 214

ISPO AWARD **GOLD WINNER**



Tracking Hardware & Mobile Devices

POMOCUP POMOCUP

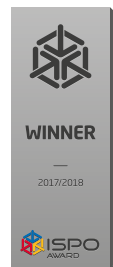
Pomocup is the first wearable for ski mountaineering. Attached to the skis with a smart clipping system, it tracks the motion and provides metrics for measuring and improving skier technique and performance. Sync with your smartwatch or phone to view and share your transition times and performance metrics.

Hall A3 / Booth 402

**Accessories****Thule****SNOWPACK EXTENDER**

Simply sliding out from the roof towards you, the SnowPack Extender makes loading and unloading gear quick, easy, and convenient.

Hall A4 / Booth 312

**Alpine Boots****K2****SPYNE 120 HEAT**

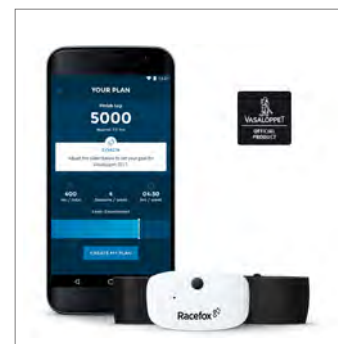
The men's high-performance Spyne 120 Heat comes with an integrated Therm-ic heat system offering up to 19 hours of heating power.

Hall A5 / Booth 202

**Alpine Boots****Tecnica****MACH 1 PRO W LV**

High-performance women's boot with Custom Adaptive Shape, thermo-formable C.A.S. Cuff Adapt, and a lambswool liner with Celliant microcrystals.

Hall A5 / Booth 502

**Cross Country****Racefox****RACEFOX VASALOPPET - DIGITAL XC-SKIING COACH**

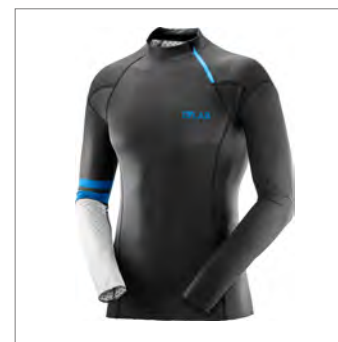
Racefox Vasaloppet is a digital XC ski coach comprising a sensor belt and an app delivering real-time measurements and feedback.

www.racefox.se

**Alpine Boots****DALBELLO****PANTERRA 130**

Dalbello all-mountain boot providing easy entry, best versatility, and effort-saving skiing thanks to its kinetic tongue's dynamic rebound.

Hall A5 / Booth 302

**Cross Country Apparel****Salomon****S/LAB CERAMIC SUIT**

This race suit enhances well-being, provides thermal comfort, better posture and balance, and better recovery to ensure best performance.

Hall A4 / 402 Booth

ISPO AWARD **WINNER**



Freeride Boots

Nordica

STRIDER PRO 130 DYN

All-in-one ski boot with Nordica downhill technology, ascent mode, Michelin climbing outsole, and pin-tech inserts.

Hall A5 / Booth 502



Gloves & Headwear

LEVEL

NFC GLOVES

Level NFC gloves allow to use phones and action cams without any effort via an inserted set of tags in the gloves.

Hall A6 / Booth 214



Goggles & Glasses

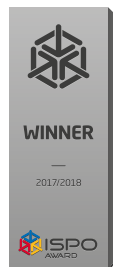
INDIGO

VOGGLE

The Indigo Voggle unites the best features of a visor and traditional snow goggles to create a whole new category in the field of eyewear.

Hall B1 / Booth 100

ISPO AWARD **WINNER**



Goggles & Glasses

adidas Sport eyewear

PROGRESSOR SPLITE

Ultra-light (80g) and highly flexible goggles with Climacool ventilation system and large field of vision, perfect for ski mountaineering.

Hall A6 / Booth 222



Helmets

MARKER

VJO

The VJO is Marker's visor helmet innovation for kids, making lost or poorly fitting goggles a thing of the past.

Hall A5 / Booth 302



Helmets

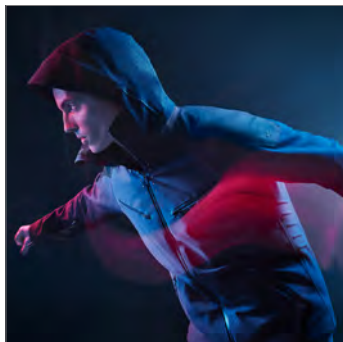
Oakley

MOD5

Helmet equipped with Modular Brim System technology, eliminating gaper gap and enhancing goggle performance with air-channeled brim ventilation.

Hall A6 / Booth 522

ISPO AWARD **WINNER**



Hybrid Outer Layer

KJUS

FREELITE JACKET

Made from three stretch layers. Engineered panels ensure perfect warmth and ventilation. Maximum freedom and full protection.

Hall B1 / Booth 302



Outer Layer 2 L

Toread

EASY ON AND OFF BACKPACK FASHION SKI JACKET

Backpack made from Twill fabric with polyester cotton combed, waterproof coating, breathable, windproof, wear- and tear-resisting.

www.toread.com.cn



Outer Layer 2 L

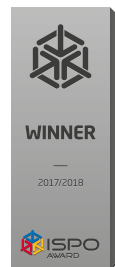
GOLDWIN

G-TITAN JACKET

A hybrid down jacket that luxuriously uses GORE-TEX 2-layer fabric with high thermal efficiency.

Hall A1 / Booth 214

ISPO AWARD **WINNER**



Outer Layer 3 L

EIDER

SHAPER JKT W

Designed for backcountry skiers, the Shaper Jacket represents a new generation of technical skiwear.

Hall A3 / Booth 512



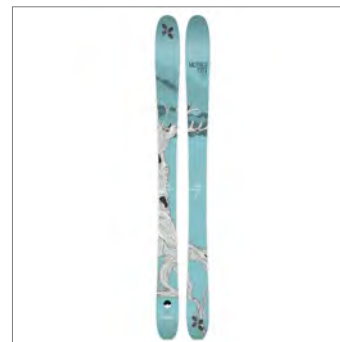
Poles

SWIX

AR100-00 / SWIX SONIC R1 ALPINE POLES

Super lightweight carbon fiber pole with high stiffness, best swing weight, and breathable grip meeting the special needs for ski touring.

www.swix.de



Ski off Piste / All Mountain

Extrem Skis

MOTHERTREE 105

A women's ski developed and built in collaboration with InspireUs, Scandinavia's largest community for girls within action and lifestyle sports.

Hall A6 / Booth 220

ISPO AWARD **WINNER**



Ski off Piste / All Mountain

ROSSIGNOL

SOUL 7 HD

Redesigned from tip-to-tail, the all-new Soul 7 HD is even lighter, more powerful, incredibly versatile and very easy to ski.

Hall A4 / Booth 212



Ski on Piste

Elan

SLX FUSION

With new Arrow Technology and a Preloaded Carbon plate, these sportive and agile skis deliver maximum confidence for short, powerful turns.

Hall A5 / Booth 214



Skitour Equipment

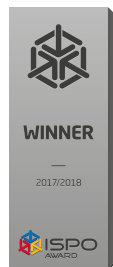
Colltex

COMBIN PHOSORESCENT SKIN

Ultralight, liner-free skin with 30% less pack size and silicone adhesion for all temperatures from -50° to +50° Celcius.

Hall A3 / Booth 606

ISPO AWARD **WINNER**



Skitouring Boots

SCOTT SPORTS

S1 CARBON SKI BOOT

Specifically designed for modern skiers demanding a boot with real touring capability and comfort without sacrificing downhill performance.

Hall A6 / Booth 501



Skitouring Boots

SCARPA

MAESTRALE RS2

The Maestrale RS2 is a fantastic backcountry boot for powder and downhill with a new frame geometry and new materials.

Hall A3 / Booth 212



PERFORMANCE



URS WEBER (GER)
Runner's World, Editor



DR. JUNYAN HU (CHN)
Institute of Textile and Clothing,
Research Fellow



MAX BARTH (GER)
Health and Beauty, Editor-in-Chief



BEATRIZ GARCIA BERCHE (ESP)
Ultra Runner, Fitness Instructor



ALEKS TATIC (ITA)
Tatic Designstudio srl, Founder and
Designer



FABRICE NOREL (FRA)
Endurance Shop, Director of
Operations



ANDREA LANGHEINRICH (GER)
Consumer

The Performance Segment includes products for endurance sports (long-distance running, marathon, ultra running, long-distance cycling, triathlon, etc.), team and racket sports, associated apparel and footwear, eyewear, hydration systems, nutrition and supplements, tracking hardware and mobile devices as well as performance software, Internet platforms and apps. Anything that supports the athlete to become more agile and powerful.

In order to evaluate the extensive array of products, an international jury panel of ten experts covered all the fields of knowledge desired and needed: athletes, journalists, sports scientists, trend scouts, retailers, and designers. A comprised cluster of know-how gathered in one room, and complementing each other's expertise.



ON CLOUDFLASH

The new Swiss racing flat without midsole. The integrated Speedboard, built from energy-transition material Pebax, loads with impact energy to release it all upon toe-off. An innovative hybrid sockliner gives extra comfort and the performance heel-cap hugs the heel for a perfect fit. The Cloudflash is made for speed.

www.on-running.com



ISPO AWARD **GOLD WINNER**



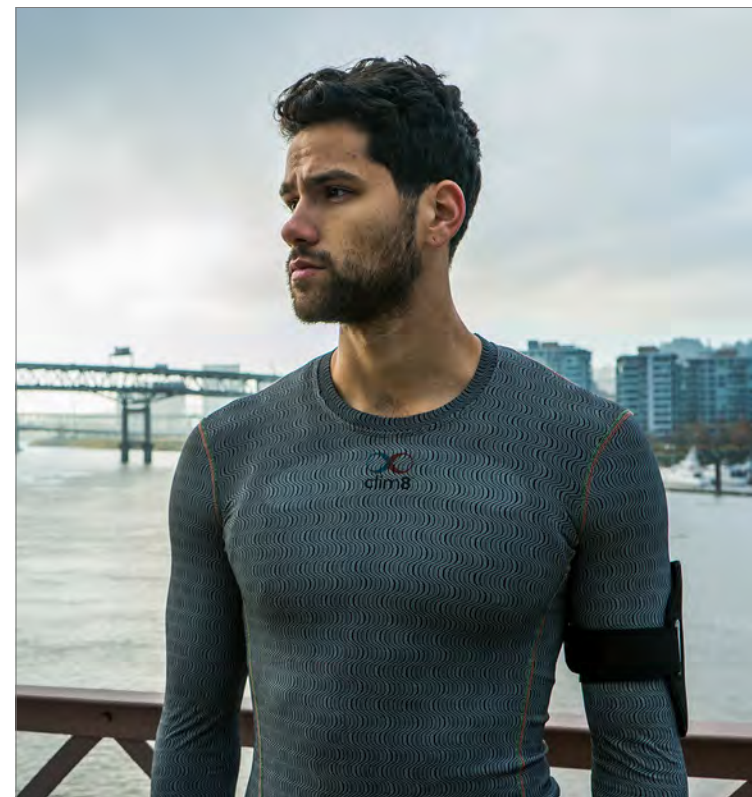
Accessories & Eyewear

JABRA ELITE SPORT

Most technically advanced, these earbuds are fully sweat and waterproof and packed with advanced features incl. in-ear heart rate monitor for fitness analysis, strong battery life (3 hours of music and calls). They support all major smart-phone operating systems offering outstanding stereo sound for calls and music.

www.jabra.com.de

ISPO AWARD **GOLD WINNER**



Base Layer

CLIM8 INTELLIGENT THERMAL CLOTHING

The intelligent Clim8 heating technology is applicable on most next-to-skin garments. Heating starts when you're cold and stops as activity increases, and re-activates at rest so that you never feel cold again. It monitors your skin temperature, your activity level and analyses your surrounding and specific body needs.

Hall B5 / BRANDNEW Village

ISPO AWARD **GOLD WINNER**



Compression Wear

PUMA

PWRRUN NIGHTCAT LONG TIGHT

The innovative iridescent reflective print provides compression and its 360° reflectivity keeps the wearer safe in low light conditions. The comfortable bonded waistband and bottom hem ensure chafe-free performance. The laminated, water resistant lining of the back zip pocket ensures personal belongings stay dry.

www.puma.de

ISPO AWARD **GOLD WINNER**



Outer Layer

SALOMON

3 IN 1 RAIN COMBI

It has got you covered three ways: wind, light rain, and wind + rain. The combination of wind protection and rain protection makes it great year-round. It is a lightweight wind vest with a longer cut, and a water-repellent, cropped hoodie. You can use each piece on its own, or combine them for full protection in adverse conditions.

Hall A4 / Booth 402

ISPO AWARD **GOLD WINNER**



Outer Layer

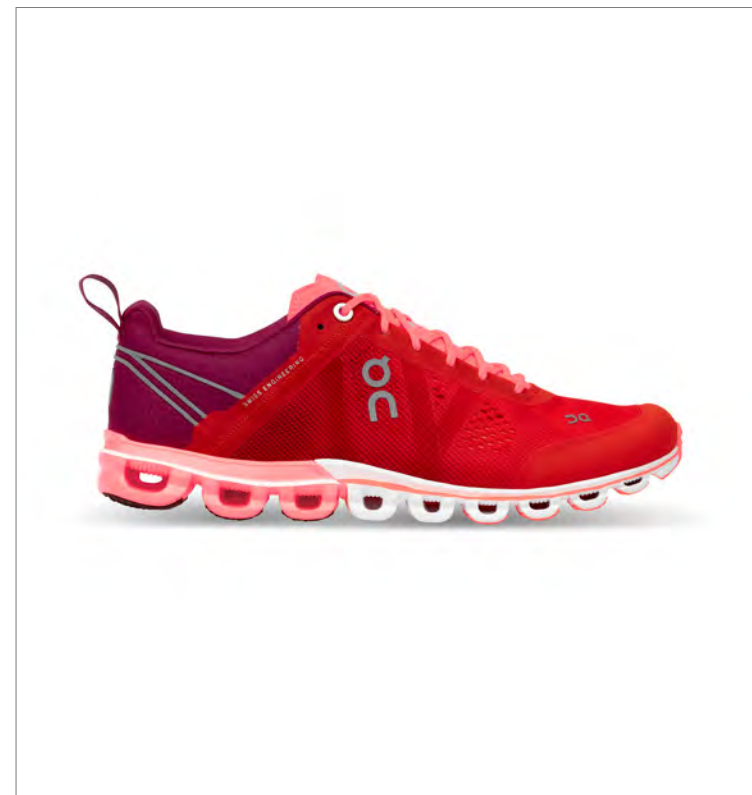
Gore Running Wear

ONE MYTHOS LADY GTX SHAKEDRY RUNNING JACKET

Made out of the lightest, most breathable and most packable GORE-TEX material ever. It offers a feminine cutline with an integrated hood and stretch inserts at the sleeves, all in a stylish matt black. Ideal for female athletes that want maximum performance even in challenging, wet conditions. Can easily be shaken dry.

Hall A1 / Booth 400

ISPO AWARD **GOLD WINNER**



Running Footwear

ON

CLOUDFLOW

The Cloudflow's Zero-Gravity foam offers soft cushioning in every step. 18 Cloud elements lock firm to provide a solid foundation for a powerful take-off. The Speedboard in the midsole with responsive flex and rocker provides a natural rolling process and the reinforcement in the forefoot makes the shoe even more agile.

www.on-running.com

ISPO AWARD **GOLD WINNER**



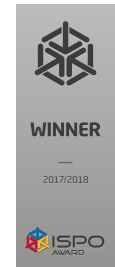
Tracking Hardware & Mobile Devices

GARMIN FENIX 5 SERIES

The fenix 5 series brings a sunlight-readable Garmin Chroma Display, improved Elevate wrist heart rate technology, extended activity tracking and multisport functions, smart notifications and Connect IQ Apps. The first ever GPS sports watch comes with preinstalled topographic maps for advanced navigation.

Hall B4 / Booth 401

ISPO AWARD **WINNER**



Accessories & Eyewear

HEY Sport
LIGHTFLEX SPRAY
HEY Sport Lightflex Spray for individual designs on untreated textiles. Waterproof, weather-resistant, can be washed out. 7 images included.

Hall A1 / Booth 420



Accessories & Eyewear

pjuractive
2skin
Integrates the upper layer of skin and forms a breathable, resistant protective film that reduces chafing and blistering without clogging the pores.
www.pjuractive.com/eu/



Base Layer

SAXX Underwear
Quest 2.0
Keeps everything in place, thanks to mesh panels that prevent skin-against-skin friction, and no exposed stitching for chafe-free comfort.

Hall B5 / Booth 408

ISPO AWARD **WINNER**



Base Layer

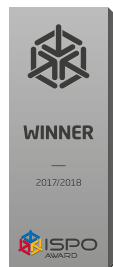
Toread

TIEF COOL STITCHLESS RUNNING T SHIRT

Made from TIEF COOL fabric for maximum moisture management, cooling and comfort in hot weather. 360 degrees reflective print.

www.toread.com.cn

ISPO AWARD **WINNER**



Hybrid Outer Layer

On

HYBRID-SHORTS

Hybrid running shorts: ultra-light, airy outer shorts made from fast-drying woven fabric plus snug and comfortable short-tights.

www.on-running.com



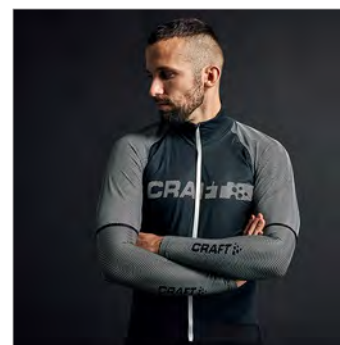
Compression Wear

KIWAMI

EQUILIBRIUM TR SHORT

Made from the best technical and abrasion resistant fabrics available, featuring Kiwami's new innovative 'EasyFix' pole carrying system.

www.kiwamitriathlon.com



Hybrid Outer Layer

Craft

SHIELD JERSEY 2.0

Lightweight, elastic, wind- and waterproof jersey with _sleeves that offers excellent weather protection and body-temperature management.

Hall B3 / Booth 402



Gloves & Headwear

VAUDE

CHRONOS GLOVES II

A bike glove made from innovative, breathable Ventipren. The soft material is waterproof and offers optimum insulation.

Hall A1 / Booth 406



Hydration Systems

Nathan

VAPORHOWE 12L RACE VEST

Breathable and comfortable women's race vest. Compression straps ensure a stable run. 1.8 L Vapor bladder is designed to reduce sloshing.

Hall B4 / Booth 312

ISPO AWARD **WINNER**



Hydration Systems

Nathan

VAPORKRUR 4L ULTRA-LIGHT RACE VEST

Form-fitting and breathable race vest with extended straw tubes to easily sip fluids. Back pocket compatible with a 1.5L bladder.

Hall B4 / Booth 312



Lifestyle & Fashion Apparel

ARYS

PURE PERFORMANCE HOODIE

Casual all-year hoodie, combining Schoeller waterproof 2 layer wooly woven and the Dryarm technology light knit by Pontetorto.

Hall B1 / Booth 103



Outer Layer

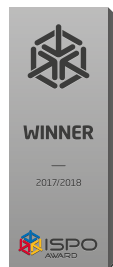
VAUDE

WOMEN'S RESCA WOOL TRICOT

This sporty, elegantly cut jersey made from a blend of finest Merino wool and high quality polyester fibers. Breathable and quick-drying.

Hall A1 / Booth 406

ISPO AWARD **WINNER**



Retail & Service Equipment

CURREX

MONOLITH

Monolith with integrated pressure plate and touch screen for advanced analyzing of customer needs. Customizable, supporting 13 languages.

Hall A5 / Booth 518



Swimwear

ROKA

MAVERICK X

Faster swimming with better mechanics, less effort and no shoulder strain thanks to the Revolution X innovation for unrivaled mobility.

www.roka.com



Trailrunning Footwear

SALOMON

SENSE RIDE

Its innovative VIBE midsole technology absorbs vibrations to reduce muscle fatigue: the best partner for your next trail running challenge.

Hall A4 / Booth 402

ISPO AWARD **WINNER**



Trailrunning Footwear

Salming

SALMING TRAILS

Featuring the Salming Natural Support System and an exclusively designed outsole for unparalleled grip on dry and wet slippery surfaces.

Hall B4 / Booth 313

HEALTH & FITNESS



URS WEBER (GER)
Runner's World, Editor



DR. JUNYAN HU (CHN)
Institute of Textile and Clothing,
Research Fellow



MAX BARTH (GER)
Health and Beauty, Editor-in-Chief



BEATRIZ GARCIA BERCHE (ESP)
Ultra Runner, Fitness Instructor



ALEKS TATIC (ITA)
Tatic Designstudio srl, Founder and
Designer



FABRICE NOREL (FRA)
Endurance Shop, Director of
Operations



ANDREA LANGHEINRICH (GER)
Consumer

Staying healthy and living a balanced lifestyle continues to become established as a means of self-development. Health & Fitness has proven itself as a sports segment with strong growth and it is expected to become one of the most important segments in sports and everyday life.

The broad range of applicants also reflected this. ISPO AWARD attracted brands from various fields: strength and cardio machines, indoor cycling,

medical and physio equipment, martial arts, fitness apparel and footwear, yoga and Pilates apparel, nutrition and supplements, tracking hardware, mobile devices as well as training software and apps.



BOWFLEX

SELECTTECH 560 DUMBBELLS

Nautilus, Inc.'s Bowflex SelectTech 560 are the first-ever "smart" dumbbells with a 3DT sensor and a corresponding app. They are the only home strength product with a brain, acting like a personal trainer by guiding users through the workout, tracking reps, sets and calorie burn as well as providing feedback on form.

Hall B4 / Booth 326



ISPO AWARD **GOLD WINNER**



Base Layer

ANITA ACTIVE

SPORTS BRA AIR CONTROL DELTAPAD

In a unique construction, the highly innovative DeltaPad cup system of the sports bra combines a triangular foam cup with an ultra-light mesh on the outside. This gives the bra a unique, sexy and feminine look and keeps the breast in place while offering 360° air permeability and maximum comfort.

Hall B3 / Booth 513

ISPO AWARD **GOLD WINNER**



Fitness Footwear

PUMA

FIERCE

Perfectly blending style and function, the Fierce shoe embarked on a new way of thinking for Puma. In a male-focused industry, the brand wanted to empower its female athletes to be the best version of themselves. It is inspired by dance movements but rigorous enough for all training needs.

www.puma.de

ISPO AWARD **GOLD WINNER**



Small Equipment

MYB YOGABOARD

The beautifully designed MYB Yogaboard is a body-sized wooden board with an innovative robust hollow construction. Weighing in at only 11kg, it's easy to transport, making any Yoga workout more intensive while enhancing the user's balance and strengthening the body core.

www.myyogaboard.com

ISPO AWARD **GOLD WINNER**



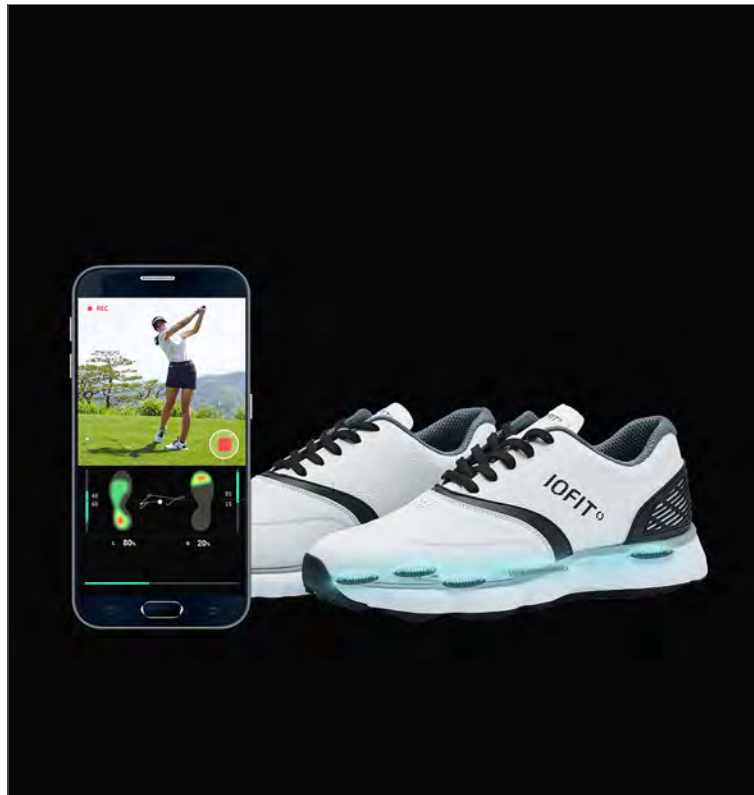
Strength- and Cardio-Machines and Indoor Cycling

MATRIX FITNESS ROWER

The sleek new rower with a variety of programs and a self-powered console offers an ultimate low-impact, full-body workout. Its smart design features a compact build, whisper-quiet operation, a smoother stroke, easy program adjustment and ten precise magnetic resistance levels.

Hall B4 / Booth 328

ISPO AWARD **GOLD WINNER**



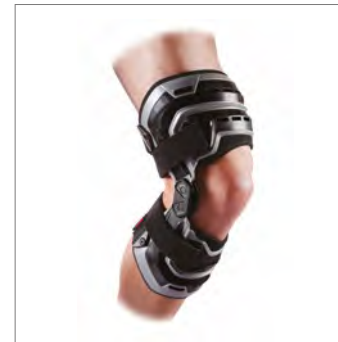
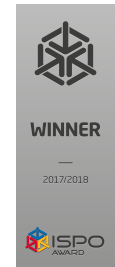
Tracking Hardware & Mobile Devices

IOFIT SMART SHOES

IOFIT is a smart golf shoe with sensors embedded in the soles to track and analyze your balance and technique - unique data that can only be obtained from your feet. It delivers real-time data and coaching tips to a smartphone app to help you better understand how to maximize your training, performance, and health.

www.iofitshoes.com

ISPO AWARD **WINNER**



Medical and Physio Equipment

McDavid

Bio-Logix Knee Brace

First semi-rigid lightweight knee brace with compression sleeve to approach custom brace stability with a comfortable and flexible fit.

Hall B4 / Booth 312



Medical and Physio Equipment

GYMBA - Walking whilst Standing

Balance Board

GYMBA is an Activity Board designed to train coordination as well as foot, leg, back and stomach muscles while standing.

www.ergotrading.eu



Small Equipment

Phantom Athletics

Phantom Training Mask

The Phantom Training Mask is a resistance breathing device boosting the athletes' stamina and increasing the overall sports performance.

Hall B4 / Booth 426



**Strength- and Cardio-Machines
and Indoor Cycling**

Horizon

BIKE CITTA BT 5.0

The Citta BT 5.0 is an exercise bike with innovative frame, hidden pedal crank, adjustable console, and safety design for the entire family.

Hall B4 / Booth 328



**Strength- and Cardio-Machines
and Indoor Cycling**

Cardiostrong

ELLIPTICAL CROSS TRAINER EX60

The EX60 is the only elliptical cross trainer with two flywheels offering a smooth movement that is joint-friendly and almost noiseless.

www.sport-tiedje.com



**Tracking Hardware
& Mobile Devices**

TomTom

TOUCH

Since muscle weighs more than fat, the Touch determines the user's fitness by not measuring the weight, but the actual body mass composition.

Hall B4 / Booth 301



ECO RESPONSIBILITY



DOMINIK FUSS (GER)
Fuss-Ion, Owner and Project Manager



BENJAMIN MARIAS (FRA)
AIR - Agence Innovation Responsable, Owner



TRISTAN A. FOERSTER (GER)
ClimatePartner, Managing Director



PROF. MATTHIAS KIMMERLE (GER)
University Albstadt-Sigmaringen, Professor



DETLEF FISCHER (SUI)
TEXTILCOLOR AG, Managing Director



JOHAN VON BREDA (NED)
Sustainable Apparel Coalition, Business Development



KJERSTI KVISETH (NOR)
2025 - Design for Life Cycles, Consulting



JOEL SVEDLUND (SWE)
Scandinavian Outdoor Group, _Sustainability Manager



MARK HELD (GBR)
European Outdoor Group, General Secretary

The term „eco“ spans across all areas of life including nutrition, automotive development, or energy production. Sports and nature are thematically closely related, which explains why sustainability is of particular importance, shaping the entire scope of products. Sports enthusiasts appreciate this development. Many of today's brands are pioneers in this field, convincing with fully documented and certified production chains. It's the ISPO AWARD Eco Responsibility jury's mission to verify these companies' products precisely.

Due to the systematic of the ISPO AWARD, every product - submitted for Eco or not - is assessed regarding its sustainability. Naturally, only those products supplying substantial information in the Eco questionnaire can receive additional points. This should be a stimulus for companies still excluding the topic of sustainability from their corporate philosophy. ISPO wants to motivate because one thing is clear: Nowadays, athletic activities and the respectful use of resources form a single entity.



Eco Responsibility

NZERO

100% ECO SUSTAINABLE WAXES FOR SNOW SPORTS

It is a 100% sustainable and ecological range of solid and liquid waxes. An alternative to common waxes that are made from paraffin, fluorinates and/or petroleum derivatives. There is no other brand in Europe that uses our ingredients formulation. Tested in different snow and environment conditions and types of users.

Hall B6 / Booth 124



Eco Responsibility

TIERRA PRODUCTS

DETERRA HOOD ANORAK

The Deterra Hood Anorak is the first ever padded anorak made out of 100 % bio-based materials. The center front gusset makes it easier to take on and off while protecting the user from wind and bad weather. Adjustable hood, large hand pockets together with a chest pocket secured with a button, and you are good to go!

www.tierra.com



Eco Responsibility

FIMBULVETR TANKR

What makes Tankr different is the combination of length, traction and versatility, enabled by that characteristic hinge and rocker design. Really long, with an extraordinary load capacity and flow, still providing exceptional maneuverability to anyone. Tankr is an unstoppable force for improved winter mobility.

Hall A6 / Booth 411

APPAREL



ALEXA DEHMEL (GER)
Active Sports Design, Owner and Designer



URS EGLI (SUI)
Brand Management Executive



LOUISA SMITH (GBR)
Louisa Smith Fashion, Consulting



DR. JUNYAN HU (CHN)
Institute of Textile and Clothing,
Research Fellow

Sports apparel is not just functional equipment supporting maximum performance. This is guaranteed by the materials, cuts, membranes, different layers, padding, constructions, modern production techniques and much more. Sports apparel is also a way to express oneself and make a statement, which turns it into a fashion.

This is where the experts of the ISPO AWARD Apparel jury come into play. The jury comprises acknowledged experts who assess and judge the submitted products regarding their functionality, construction, and materials.

Representatives from the Action, Outdoor, Ski, Performance and Health & Fitness juries support them. It ensures that every detail is examined from every possible angle and that all requirements applicable to modern sportswear are taken into account.

Contact us

If you have any questions, please contact:

Kathrin Hagel
PR Manager
Tel. +49 89 949-21474

kathrin.hagel@messe-muenchen.de

