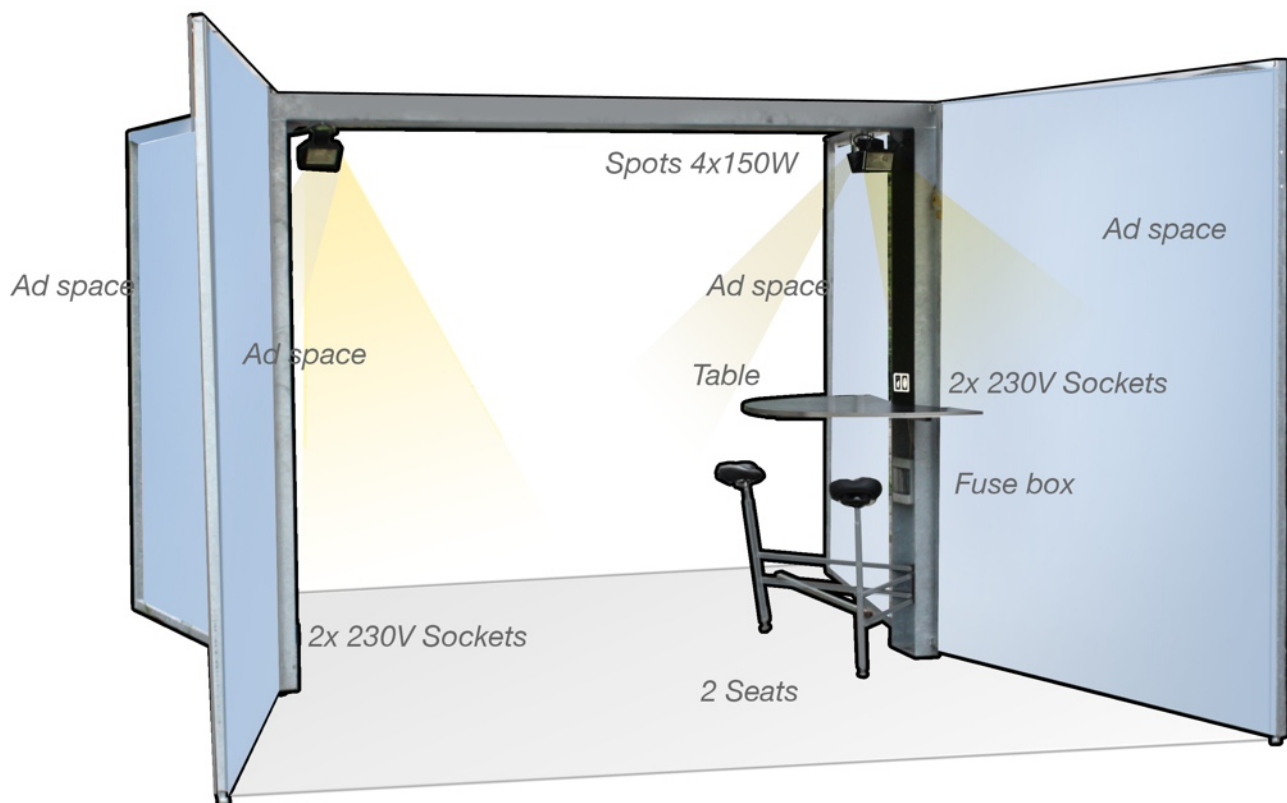


CHECK IN AT ISPO BIKE 2012

16 - 19 August 2012 Munich

Registration Deadline: 30 March 2012

## REGISTRATION ExtraEnergy CHECK IN AT ISPO BIKE 2012



Gain direct access to Test IT Parcours in E-Mobility Hall

## **The ExtraEnergy CHECK IN at ISPO BIKE is the uncomplicated solution for the presentation of your pedelecs and e-bikes.**

### **EASY**

a booth that has everything: exhibiton space, table, seats, lights and a lot of room for your vehicles.  
You just need your personnel and materials - we take care of the rest.

### **A BARGAIN**

Construction - space- carpet - electricity - insurance and more for 2.800€.

### **DIRECT**

direct access to the Test IT Track  
Your banners at the track included  
Optional: Branding of the booth + extra banners

ExtraEnergy works with the LEV industry since 19 years. The Test IT tracks of our organisation are well known since 1997.

At ISPO BIKE testing is the most important thing. Almost a whole hall is dedicated to the Test IT Track with a ramp (60 m long) which offers unforgettable experiences with your vehicle.

**TAKE YOUR CHANCE!**

CHECK IN AT ISPO BIKE 2012

16 - 19 August 2012 Munich

Registration Deadline: 30 March 2012

**To register, simply fax this application to: +49 36646 270 95  
or send via mail to:  
ExtraEnergy e.V. • Koskauer Str. 100 • 07922 Tanna • Germany**

**PLEASE CHOOSE YOUR SERVICES**

- TEST IT Track participation with CHECK IN booth at E-Mobility Hall** 2,800€

This includes booth construction, floorspace, electricity, advertisement space for 2 banners or bowflags at the track for the whole duration of the event. The banners / bowflages have to be manufactured and provided by the participant. See appendix for details. Additional charges: a) obligatory communication fee of 284€ (including registration fee, basic entry catalogue, one copy printed catalogue, basic entry tour guide and further communication services) and b) waste disposal (24 €) and c) AUMA fee (9.60€). These fees will be invoiced by the Messe München GmbH.

- TEST IT Track participation with CHECK IN booth plus 1/2 page for your products in the ExtraEnergy E-Mobility Guide distributed on the Trade Show** 3,200€

\*This includes booth construction, floorspace, electricity, advertisement space for 2 banners or bowflags at the track for the whole duration of the event. The banners / bowflages have to be manufactured and provided by the participant. See appendix for details. The content for the ExtraEnergy Magazine must be delivered by the participant till 15th July 2012 and is subject to editing by the ExtraEnergy e.V.. Additional charges: a) obligatory communication fee of 284€ (including registration fee, basic entry catalogue, one copy printed catalogue, basic entry tour guide and further communication services) and b) waste disposal (24 €) and c) AUMA fee (9.60€). These fees will be invoiced by the Messe München GmbH.

- Additional Banners : \_\_\_\_ (No) Package(s)** 350€

\*One package contains 10 banners for the whole duration of the event and can only be booked in combination with a Check In booth. The banners have to be manufactured and provided by the participant. Please see appendix for details.

- Additional Bowflags : \_\_\_\_ (No) Package(s)** 350€

\*One package contains 10 bowflags for the whole duration of the event and can only be booked in combination with a Check In booth. The bowflags have to be manufactured and provided by the participant. Please see appendix for details.

CHECK IN AT ISPO BIKE 2012

16 - 19 August 2012 Munich

Registration Deadline: 30 March 2012

## YOUR DETAILS

---

Company name

---

Address

---

Post Code

City

---

Country

Homepage

---

European VAT ID

## PERSON TO CONTACT

---

Surname/Name

Phone

---

Email

## METHOD OF PAYMENT

Bank transfer after invoice

\* Confirmation of bank transfer has to be shown at the trade show if transferred only a few days ago.

## TERMS AND CONDITIONS

With my signature, I agree to respect the contractual terms and conditions stated as well as the participant information. Every person acting on behalf of another person authenticates liable as a principal for accounts receivable of ExtraEnergy e.V. concerning the ordered service in the occasion of ISPO BIKE 2012.

CHECK IN AT ISPO BIKE 2012

16 - 19 August 2012 Munich

Registration Deadline: 30 March 2012

---

Place and date

Company stamp and legally binding signature

---

Repeat name in CAPITAL letters.

#### CONTACT

For questions regarding the ExtraEnergy TEST IT Track and the CHECK IN please do not hesitate to contact Ms. Anne Möckel.

**Tel:** +49-(0)36646-270 94

**email:** [anne.moeckel@extraenergy.org](mailto:anne.moeckel@extraenergy.org)

*Please find the participant information, terms and conditions and further specifications below.*

CHECK IN AT ISPO BIKE 2012

16 - 19 August 2012 Munich

Registration Deadline: 30 March 2012

#### PARTICIPANT INFORMATION

*ExtraEnergy kindly invites you to present your products on the ExtraEnergy TEST IT Track at ISPO BIKE's e-mobility pavillon. Your Products will be tested by the visitors during the show. The Check In booth is located directly at the Test IT Track.*

#### SERVICES

- **Access to testtrack- Speed and regular** (Personnel for Check In not included)

Please note: To get the most out of this event, please make sure to bring not only your products, but people with expertise. Testriders in general are very interested and open to instructions on and to the Test IT Track and products. Please make sure you give them a safe ride and a good experience with your product.

- **Check In Booth of 16m<sup>2</sup>** with access to Test IT Track for 2.800 EUR. The offer for 3.200 EUR includes half page in the ExtraEnergy E-Mobility Guide to present your product.

Please note: The content for the ExtraEnergy E-Mobility Guide is not an advert, but editorial content, which needs to be provided by the participant till 15th July 2012 and will be subject to editing by the ExtraEnergy editors.

- **Additional banners or bowflags option** - Packages of 10 Banners or Bowflags cost 350 EUR.

Please note: Bowflags and banners need to be provided by the participant. Please use appropriate flag material. (Please see appendix for details.) All promotional material must be delivered to ExtraEnergy or latest till 15th August 2012 to Messe Munich.

#### INSURANCE

We want to make sure, everybody is having a good time. That means, that safety is most important. Therefore, we take care of a general insurance so you can present your products with the greatest peace of mind.

#### PRICES

All rates for the ExtraEnergy services are published on the enclosed application form and given in Euros (EUR). Contract partner is ExtraEnergy e.V.. Prices are exclusive of VAT. All rates are given for the duration of the event.

You will receive an invoice that serves as confirmation for your application. Details on payment options and wire transfer informations will be stated on the invoice.

CHECK IN AT ISPO BIKE 2012

16 - 19 August 2012 Munich

Registration Deadline: 30 March 2012

### CONTRACTUAL CONDITIONS EXTRAENERGY CHECK IN AND TEST IT TRACK

Definition: ExtraEnergy e.V. is, for the purposes of this contract, to be known as the ORGANIZER. Similarly, all exhibitors, exhibitors' representatives, importers and dealers of Light Electric Vehicles (pedelecs, e-bikes, e-scooters and other LEVs with electric drive unit or components), who are participating in test track activities, are to be known as EXHIBITORS.

#### 1. Application and Confirmation

The deadline for registration is 30 March 2012. Your participation will be confirmed upon our receipt of your signed and completed fax. The exhibition contract becomes effective for the ORGANIZER as soon as payment (see section 4) is received and is effective only if we have not, within one week, informed you that your participation is not possible.

#### 2. General Terms of Contract

The Participant Information for the ExtraEnergy TEST IT Track enclosed in the application documents and the EXHIBITOR Information, which have been sent to you together with the confirmation, are part of the exhibition contract. By his/her signature the EXHIBITOR acknowledges agreement to the general trading conditions related to use of the test track. The ORGANIZER is responsible for the arrangement, conception and design of the exhibition. The EXHIBITOR has no authority regarding method of presentation. The ORGANIZER will take the wishes of the EXHIBITORS into consideration as they are made known to him and do not negatively affect the overall concept of the exhibition. The exhibition conditions and house policy of the fair and congress are binding in so far as there are no other agreements made regarding this contract.

#### 3. Watching and Introducing the Products to Visitors on the TEST IT Track

During the official period of the trade fair, watching and introducing the product to visitors must be guaranteed by the EXHIBITOR. If a representative of the EXHIBITOR is not present, ExtraEnergy may refuse to allow test rides on the product during this time. Alternatively, ExtraEnergy may organize service staff for the product. In this case, the EXHIBITOR is expected to pay costs for this as a daily fee.

#### 4. Bill- and Payment Conditions

The deadlines for payment must be observed. Following receipt of your application by fax, you will receive by way of confirmation of your application, an invoice for the total cost of your participation, which is due for immediate payment. Should the payment fail to reach ExtraEnergy by the registration deadline, or should the exhibitor not be able to provide, at the event, sufficient documentation to show the payment has been made, then an immediate payment must be made in cash.

#### 5. Contract Withdrawal, Indemnification

In the following cases the ORGANIZER can withdraw from the contract: a) If there are not enough EXHIBITORS participating in the special exhibition. b) If the fair and congress company withdraws its agreement for the TEST IT Track. In these cases the EXHIBITOR will be paid back what has been received on account. Any further claims will not be paid. If the EXHIBITOR does not pay the bill as agreed in the contract, the ORGANIZER is allowed to withdraw from the contract without any further delay. In this case the EXHIBITOR has no demands on return of any payment on account. The ORGANIZER carries out the special exhibition for idealistic reasons. Therefore any claims concerning indemnification by the EXHIBITOR towards the ORGANIZER for unsatisfying realization during the exhibition or for damages of exhibited articles are impossible. Claims of indemnification are possible in case of intentional or wreckless actions only. The EXHIBITOR can withdraw from the contract if the ORGANIZER will give his agreement, and if an appropriate replacement can be found.

16 - 19 August 2012 Munich

Registration Deadline: 30 March 2012

6. jl.medien e.K., Inselkammerstrasse 5, 82008 Unterhaching is the official catalogue publisher for ISPO BIKE. An official catalog will be published for the exhibition. All directly exhibiting companies and co-exhibitors will be listed alphabetically in the exhibitor directory and the product directory included in this catalogue, as well as in the online database of Messe München GmbH; this is a basic listing which is a mandatory component of event participation. By registering for the exhibition the PARTICIPANT has to pay an obligatory communication contribution. The obligatory communication contribution includes the application fee, the basic catalogue entry (print, online and mobile), one copy of the print catalogue (available on site at the fair), the basic entry in the Tour Guide as well as further communication services in accordance with clause B 11 "Catalogue - Internet - Mobile." A fee amounting to EUR 284 is charged for the obligatory communication contribution. Additional catalogue entries are available for a supplemental charge. Any additional listing and advertising opportunities as well as their fees are shown in the catalogue order forms sent to all exhibitors by jl.medien e.K. Invoices are issued directly by jl.medien e.K.

The ORGANIZER and Messe München GmbH accept no liability for the accuracy and completeness of the published data. The PARTICIPANT confirms that they are authorized to utilize the data submitted to the catalog and online database by Messe München GmbH, and accepts full responsibility for the authenticity, and in particular the admissibility of the submitted promotional data in terms of competitive law. In case of a third party claim against the ORGANIZER, jl.medien e.K. or Messe München GmbH, due to lawful or competitive inadmissibility of the submitted promotional data, the PARTICIPANT indemnifies the ORGANIZER, jl.medien e.K. or Messe München GmbH, against any and all claims pursued, including all legal fees incurred by the ORGANIZER, jl.medien e.K. or Messe München GmbH for defense against said claim(s). This stipulation also applies to exhibitor listings in the catalog and online database authorized by the PARTICIPANT.

#### 7. Miscellaneous

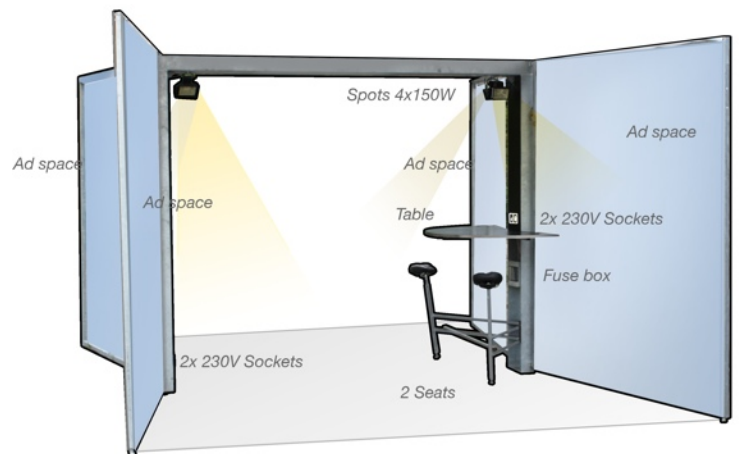
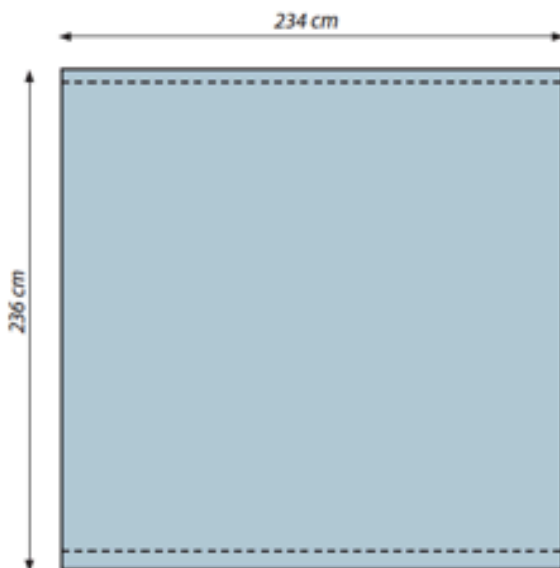
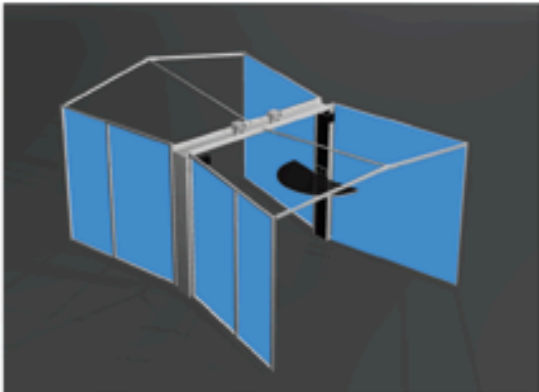
Any alterations or abridgements of the contract must, for legal reasons, be submitted in written form. All actions connected with production of the special exhibition will take place at the location of the event. All other activities will be at the main office of the ORGANIZER. If legal proceedings are brought, the original contract in German shall take precedence (available on request).

CHECK IN AT ISPO BIKE 2012

16 - 19 August 2012 Munich

Registration Deadline: 30 March 2012

*Check In measures and sides for branding*

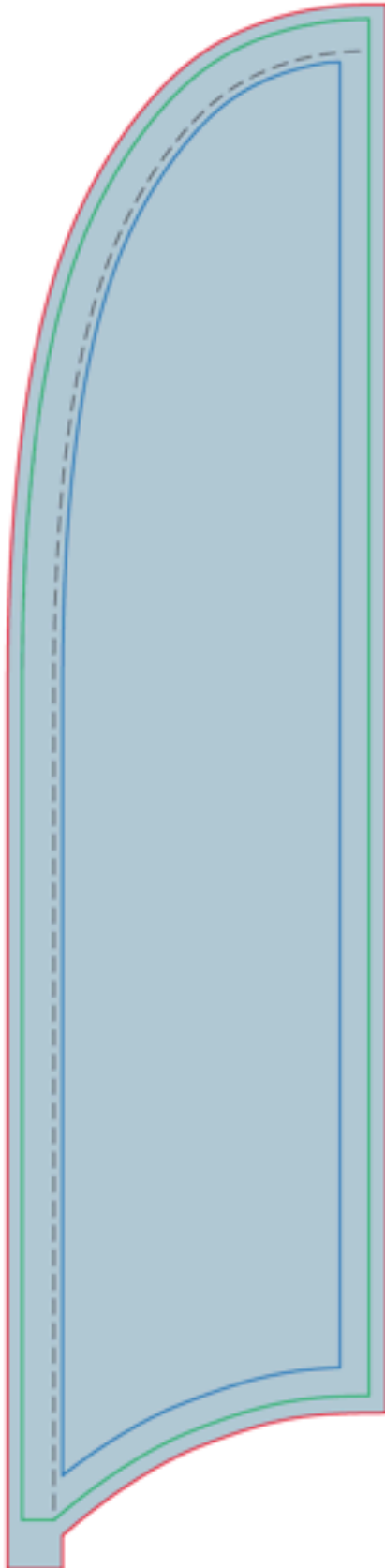


CHECK IN AT ISPO BIKE 2012

16 - 19 August 2012 Munich

Registration Deadline: 30 March 2012

Bowflag



**Bowflag® Medium**  
konkav / concave  
60 x 260 cm

Maßstab / scale: 1:10

**Zugaben:**  
Ausreichend Zugaben bis zur roten Linie anlegen.

**Endformat:**  
Dies ist die endgültig sichtbare Größe.

**Gestaltungsbereich:**  
Schriften und wichtige Gestaltungselemente möglichst nur innerhalb dieses Bereiches platzieren.

**Bleed line:**  
In case of solid or full colour background please allow enough bleed. The background colour has to end at the red line.

**End format:**  
The green line shows the finished size.

**Artwork area:**  
In order to avoid seams going through logos or logos being chopped off, please place any design within the blue line.

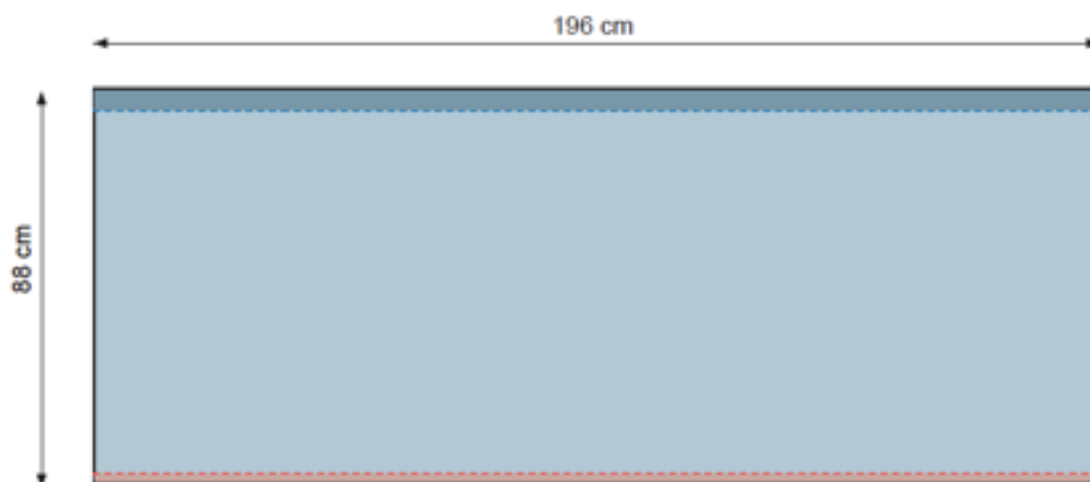
---  
Hohlraum / hemstitch

CHECK IN AT ISPO BIKE 2012

16 - 19 August 2012 Munich

Registration Deadline: 30 March 2012

Werbefläche für Testparcour  
*banner ad for testparcour*



- angenähter Klettbandstreifen/ *stitched hook-and-loop tape*
- eingenähtes Bleiband/ *stitched weight-strip*